

a distinctive difference

Shirley

FUN FASHION FINDS
For 2009

EASY ENSEMBLES
Ready to Wear

SOMETHING SHIRLEY
Beautiful Bridal

ALL DRESSED UP
Costumes for
Year-Round Fun

Big Book
2009



The go-to gear you'll wear all year.

This year, look to Shirley for the newest looks and the latest styles to keep you on top of the hottest trends. The keyword is versatility—rich colors you can mix and match and feel-good fabrics you can dress up or down, united in garments that go where you go, with fashion flair to spare.

If you thought Shirley was just for the bedroom, think again! Our new Ready to Wear Collection pairs high-style bustiers, corsets and tops with matching thongs, bikinis or skintinis for an intimate night in... or add skirts, pants, jeans or tights for an exciting night out. Shirley's Bridal Collection takes the entire wedding party down the aisle in style, then tucks in your trousseau to spice up the honeymoon. Feeling playful? Shirley's Costume Collection brings his-and-her fantasies to life all year long. And if you're looking for trendy, our new 100% Babe line is 100% hip, supersizing sassy fashion in XS sizes. It's all here... and all Shirley... in sizes to fit all ages and all body types, from petite to plus.

And while this year ushers in some exciting changes, other things stay just the same. In an era of outsourcing and mega-mergers, we're still a private family business, committed to bringing you the personal service and exceptional quality you've come to expect from the Shirley name. Since 1948, three generations of Schlobohms have run Shirley of Hollywood with great pride, working together to oversee every aspect of our business, from design and manufacturing to sales and distribution. The satisfaction of doing work we love with the people with love shows in every Shirley garment—in the unique craftsmanship, superlative fit and exquisite detail that have become the hallmarks of the Shirley brand.

We still handpick our own fine fabrics and design each garment to meet our high-end specifications, just like our founder, Herman Schlobohm, did more than 60 years ago. We offer more options than anybody else—more styles, more colors and more than 200 varieties of laces and trims to give every garment a luxurious touch. Our customer service remains the best in the business. We work hard to make every experience the best it can be, combining the best quality, the best fit and the best selection into the best value available today.

Winter, spring, summer and fall, think of Shirley as your go-to brand—the brand that lets you be you day or night. Glamorous, hip, hot, a little sexy or a lot, it's all new... and all you... at Shirley!

SIZE CHART

Small: Dress sizes 6-8

Bust 32-34, Cup sizes A-B

Waist 23-25, Hips 34-36

Medium: Dress sizes 10-12

Bust 34-37, Cup sizes B-C

Waist 25 1/2-28, Hips 36-39

Large: Dress Size 14

Bust 37-40, Cup sizes B-C

Waist 28-31, Hips 39-41

X-Large: Dress sizes 16-18

Bust 40-43, Cup sizes B-C

Waist 31-34, Hips 41-44

Front cover: Garment No. 9506

TABLE OF CONTENTS

STYLE	ITEM	PG
10	SCALLOPED EMBROIDERY CROTCHLESS THONG PANTY	28
14	BRIDAL GARTER IN GIFT BAG	144
197	LACE "OPEN FRONT" PANTY	144
275	SPANDEX "BOOTY" SHORTS	154
281	ALL OVER SEQUIN BOOTY SHORTS	150
324	CHOPPER BAR SHELF BRA	32
331	SCALLOPED EMBROIDERY SHELF BRA	28
369	LACE UNDERWIRE OPEN TIP BRA	32
477	ITALIAN MICRO-FIBER SPANDEX "HOT" SHORTS	42, 43, 103
614	FLORAL TAPESTRY WAIST CINCHER	131, 136
622	SCALLOPED EMBROIDERY GARTERBELT	28, 144
623	STRETCH SATIN & BLACK LACE WAIST CINCHER	130, 131, 136
660	STRETCH SPANDEX CHAIN WAIST CINCHER	129, 136
1092	TWO TONE LACE AND STRETCH MESH CHEMISE	52
1137	BEADED FRINGE BABY DOLL	103
1198	BEADED FRINGE 2 PIECE SET	103
2104	COTTON SPANDEX BODY SUIT	128, 129
2105	VERA SATEEN SKIRT WITH RUFFLE	4, 111, 117, 132
2106	VERA SATEEN PLEATED SKIRT WITH BELT LOOPS	118, 132
2107	POLKA DOT STRETCH POPLIN SKIRT	8, 45, 114, 133
2108	ZEBRA AND DOT 2 PIECE SET	45
2497	STRETCH LACE AND 15 DENIER "OPEN BUST" TEDDY	104
3048	STRETCH MESH AND STRETCH LACE GARTERED CHEMISE	93
3076	SPANDEX, FISHNET & GINGHAM GARTERED CHEMISE	22
3077	SPANDEX, STRETCH FISHNET & GINGHAM 3 PC SET	22
3091	NET & RUFFLED BEADED LACE, LAYERED MINI SKIRT	3, 107, 132
3175	SCALLOPED EMBROIDERY AND SHEER NET BABY DOLL	28
3202	KNIT SHIRRED OFF THE SHOULDER MINI DRESS	127
3203	STRETCH SATIN PENCIL SKIRT	107, 108, 132
3967	SOFT AND SHINY LACE LONG GOWN	80
4227	SPANDEX AND STRETCH LACE LONG PANTS	126, 131, 134
4250	SKINNY STRETCH PANTS W/ZIPPERS	13, 48, 112, 126, 128, 129, 134
4252	KNIT SHIRRED SKINNY PANTS	9, 12, 110, 115, 130, 134
7083	LYCRA STRAPPY 4 PC SET COSTUME	104
7226	TEACHERS PET COSTUME	146
7300	INMATE MOST WANTED COSTUME	149
7320	BOOTY CAMP COSTUME	149
7351	HIPPITY-HOP COSTUME	145
7374	DOWNSTAIRS MAID COSTUME	146
7385	PETICOAT	150
7436	MAN OF THE MANSION COSTUME	145
7446	IT'S MS. POLICE TO YOU COSTUME	149
7459	NIGHT NURSE COSTUME	150
7488	SCOTTISH LASSIE COSTUME	148
7489	ASIAN SCHOOL GIRL COSTUME	148
7508	BAD BUNNY COSTUME	147
7539	SULTRY HAREM GIRL COSTUME	147
7541	SKULLS AND ROSES COSTUME	148
7544	FABSEX COSTUME	150
7545	CUTESY MAID COSTUME	146
7645	SEXERGIZER BUNNY COSTUME	147
8463	CHARMEUSE CHEMISE	95
8465	CLASSIC KIMONO BACK BY POPULAR DEMAND	95
8997	SATIN TAPESTRY FLOWERED JACQUARD STRAPLESS CORSET	27
9001	STUNNING FLORAL TAPESTRY STRAPLESS CORSET	25, 121, 138
9024	SATIN AND LACE "OPEN BUST" TEDDIETTE 2PC SET	104
9378	BEST-SELLING CORSET	18
9393	SATIN TAPESTRY JACQUARD LONG-LINE BUSTIER	24, 144
9407	PADDED PUSH-UP BUSTIER	29
9503	SKULLS AND PLAID CORSET	22
9505	ZEBRA AND DOT STRETCH POPLIN BUSTIER	8, 45, 114
9506	HEAVY SATIN AND LACE CORSET	3, 107
20015	CHARMEUSE AND DYED-TO-MATCH LACE CHEMISE	98
20016	CHARMEUSE AND DYED-TO-MATCH LACE BABY DOLL	97
20059	SOFT CHARMEUSE BOXERS	6, 47, 76
20083	BEST SELLER—CHARMEUSE AND LACE BABY DOLL	138
20115	CHARMEUSE AND SHEER NET BABY DOLL	86, 143
20116	CHARMEUSE AND SHEER NET LONG GOWN	87, 142
20122	CHARMEUSE CHEMISE	85, 143
20123	PRETTY AND SEXY SHEER NET ROBE/SHIRT	84, 86, 142
20144	STRETCH LACE SHELF BRA	30
20145	STRETCH LACE STRAPPY THONG	30
20146	STRETCH LACE GARTERBELT	30
20155	FLORAL APPLIQUE AND STRETCH MESH STRAPPY BUSTIER	94
20255	CHARMEUSE AND LACE BABY DOLL	99
20258	MULTI FIBER CHIFFON AND STRETCH LACE BABY DOLL	73



25926
(pg 7)

*divine
lines*

STYLE	ITEM	PG
20276	PATTERNED VENICE AND STRETCH MESH CHEMISE	102
20277	RHINESTONE STUDDED VENICE SHELF BRA	32, 102
20279	VENICE THONG PANTY	32, 102
20280	VENICE GARTERBELT	32, 102
20281	PIN STRIPE EMBROIDERY & MESH CORSET STYLE CHEMISE	72
20295	STRETCH KNIT AND "EYELASH" LACE TRIM CHEMISE	71
20300	CHARMEUSE AND LACE LONG GOWN	96
20306	MULTI FIBER CHIFFON & TRI-TONE LACE BABY DOLL	82
20307	EVERY FIGURE, OUR HIGH MULTI CHIFFON CHEMISE	83
20317	MULTI FIBER CHIFFON LONG SLEEVE BLOUSE	12, 110, 126, 131
20351	VINE PATTERNED JACQUARD GARTERED CHEMISE	68
20356	ANIMAL PRINT STRETCH KNIT AND LACE 3 PIECE SET	69
20357	TWO TONE STRETCH LACE 2 PIECE SET	64
20358	TWO TONE LACE AND SPANDEX MESH TEDDY	66
20359	TWO TONE STRETCH LACE AND SPANDEX MESH CHEMISE	65
20364	CHARMEUSE AND CHIFFON LONG GOWN	37
20365	CHARMEUSE CHEMISE	35
20366	CHIFFON BABYDOLL	34
20367	CHIFFON COAT/ SLEEP SHIRT	36, 37
20378	CHARMEUSE AND NET BABYDOLL	59
20379	CHARMEUSE AND NET BRA AND SKONG SET	58
20383	EMBELLISHED LACE AND NET BRIDAL BABY DOLL	33, 139
20384	ANGEL & LOVE STRETCH JACQUARD WAIST CINCHER	136, 138
20385	ANGEL & LOVE STRETCH JACQUARD GARTER BELT	138
20386	STRETCH DOT LACE 2 PIECE SET	38
20387	STRETCH DOT LACE CHEMISE	39
20389	ORCHID EMBROIDERY CHARMEUSE AND NET BABY DOLL	46
20390	ORCHID EMBROIDERY CHARMEUSE 3 PC SET	47
20391	ANGEL & LOVE STRETCH JACQUARD THONG	138
20393	TWO TONE LACE 3 PIECE SET	30, 52
20364E	CHARMEUSE AND CHIFFON LONG GOWN	76, 141
20365E	CHARMEUSE CHEMISE	75, 141
20366E	CHIFFON BABYDOLL	74, 140
20367E	CHIFFON COAT/ SLEEP SHIRT	74, 140
25002	BEAUTIFUL FLORAL VINE STRETCH LACE CHEMISE	62
25003	FLORAL & VINE STRETCH LACE GARTERED THONG TEDDY	63
25004	STRETCH LACE AND FANCY NET "PEEK-A-BOO" CHEMISE	92
25018	CUTE POLKA DOT STRETCH MESH AND LACE CHEMISE	67
25033	CROSS HATCHED NET, LACE & RIBBON GARTERED CHEMISE	91
25034	CROSS HATCHED NET, LACE & RIBBON THONG TEDDY	90
25037	BLING SHELF BRA	89
25038	BLING GARTER BELT	89
25039	BLING OPEN FRONT PANTY	89
25040	ALL ABOUT THE BLING CHEMISE	88
25041	OUTRAGEOUSLY SEXY BLING TEDDY	88
25062	CHARMEUSE AND OSTRICH FEATHER LONG GOWN	77
25063	EYELASH LACE AND SATIN OPEN BUST 2 PIECE SET	57
25065	MESH LEOPARD PRINT AND OSTRICH FEATHER 3 PIECE SET	43
25066	MESH LEOPARD PRINT CHEMISE WITH OSTRICH FEATHERS	44
25067	MESH LEOPARD PRINT TEDDIETTE WITH OSTRICH FEATHERS	42
25068	SATIN & CHAIN CHEMISE	55
25070	SATIN & CHAIN 2 PIECE SET	54
25071	SATIN PLEATED MINI SKIRT	54
25072	SUPER SEXY EYELASH LACE STRAPPY CHEMISE	56
25073	FLORAL FLOCKED VELVET ON SATIN WAIST CINCHER	126, 136
25082	STRETCH BLEACH DENIM SKIRT	120, 133
25083	CUTESY RIBBON AND LACE BABY DOLL	51
25084	CUTESY RIBBON AND LACE 2 PIECE SET	51
25085	STRETCH MESH AND "SEXY" LACE CHEMISE	53
25086	STRETCH MESH AND "SEXY" LACE BRA & BOY SHORT SET	53
25088	STRETCH MESH AND "SEXY" LACE GARTER BELT	53
25089	STRETCH MESH AND "SEXY" LACE BOY SHORT	53
25090	GLITTER DENIM MINI SKIRT	122, 133
25091	KNIT TOP	48, 126
25092	LONG KNIT GOWN	50
25093	KNIT CHEMISE	49
25094	KNIT THONG	49
25095	KNIT BOY SHORT	49
25096	STRETCH FLORAL SCROLL JACQUARD SKIRT	14, 123, 133
25097	POLKA DOT STRETCH KNIT CHEMISE	41
25098	POLKA DOT STRETCH KNIT BRA, SKIRTINI, & G-STRING SET	40
25101	STRIPE TAPESTRY WAIST CINCHER	127, 129, 136
25102	CHIFFON RUFFLED BLOUSE	130
25901	STRETCH SATIN AND STRETCH LACE CORSET	16
25907	SATIN CORSET WITH BREAK AWAY ZIPPER FRONT	13, 112
25915	VELVET FLOCKED SATIN & "EYELASH" LACE CORSET	11

STYLE	ITEM	PG
25917	HEAVY SATIN STRAPLESS CORSET AND G-STRING	12, 110
25922	STRETCH SATIN CORSET	4, 111
25923	STRETCH BLEACH DENIM CORSET	120
25924	SKULLDUGGERY CORSET	9, 115
25925	CHATEAU MEDALLION STRAPLESS TAPESTRY CORSET	2, 108
25926	CASABLANCA STRIPE TAPESTRY VEST STYLE CORSET	7, 117
25927	GLITTER DENIM HALTER STYLE VEST CORSET TOP	122
25928	STRETCH FLORAL SCROLL JACQUARD CORSET	14, 123
25929	POLKA DOT STRETCH KNIT BUSTIER	6, 40
27000	SATIN 3/4" FITTED PANT WITH SHIRRING	3, 128, 129, 135
27001	SATIN LAYERED SKIRT	21, 109, 132
27002	SATIN 3/4" FITTED PANT	118, 119, 129, 135
27003	SATIN AND LACE HOT PANT WITH BELT	8, 113, 135
29000	STRETCH SATIN CORSET	19, 119
29002	SEXY, SATIN BUSTIER	18
29005	SATIN STRAPLESS CORSET	16, 142
29020	VICTORIAN STRETCH JACQUARD CORSET	21, 109
29038	STRETCH KNIT AND "EYELASH" LACE TRIM BUSTIER	23, 70, 118
29045	STRETCH SATIN AND MESH CORSET	15
29047	"PEBBLE" CHARMEUSE, STRAPLESS, CORSET	10, 125
29056	TWO-TONE LACE & SHIRRED SPANDEX MESH BUSTIER	17, 66
29063	ANGEL & LOVE STRETCH JACQUARD BUSTIER	5, 116, 139
29064	STRETCH JACQUARD AND STRETCH LACE CORSET	8, 113
30010	SOLID SILK BOXER SHORTS	10, 75
30023	SILK CHIFFON SKIRT	125, 131, 132
30075	SILK CHIFFON LONG SLEEVE TAILORED SHIRT	81
30080	SILK THONG	8
30106	SHEER AND SEXY, OUR SILK CHIFFON CHEMISE	78
30107	PRINTED BURNOUT SILK CHEMISE	79
30114	STRIPED FLUFFY ROBE	62
45015	LACE OVERLAY ON STRETCH SATIN UNDER WIRED BRA	31
45018	LACE OVERLAY STRETCH SATIN SKIRTINI	31
45019	LACE OVERLAY STRETCH SATIN BABY DOLL	144
51048	ANIMAL PRINT SATIN & EYELASH LACE BRA	32
51049	ANIMAL PRINT SATIN & EYELASH LACE THONG	26, 32
51050	ANIMAL PRINT SATIN & EYELASH LACE GARTER BELT	32
51057	STRETCH POLKA DOT SATIN BRA	31, 60
51058	POLKA DOT STRETCH CHARMEUSE THONG	20, 31, 60, 61
51059	STRETCH POLKA DOT CHARMEUSE AND LACE CHEMISE	60
53010	DANCE WITH YOUR STAR CHEMISE	100
53011	GLITZY TEDDY IN STRETCH MESH	101
53012	LINED SEQUIN AND BEADED FRINGE 2 PIECE SET	100
59011	GANGSTER STRIPE SPANDEX AND MESH BUSTIER	20
59013	ANIMAL PRINT STRETCH SATIN & EYELASH LACE BUSTIER	26, 124
59014	STRETCH SATIN POLKA DOT BUSTIER	20, 60
"READY TO WOW" COLLECTION		105-135
BRIDAL PAGES		137-144
COSTUMES PAGES		145-150
GYZ PAGES		163-176
BLOUSES		130-131
BOAS		158
CORSET JEWELRY HOLDER		160
GARTERS		158
GARTERBELTS AND SKIRTINIS		156-158
GLOVES		158
HOSIERY		151-153
LIPTRIX		159
LUST SCENTED PRODUCTS FOR WOMEN: L800, L802-804		161
PADS AND ENHANCERS		159
PANTS AND SHORTS		134-135
PANTIES		154-155
PANTY PACK		155
SHOES		151
SKIRTS		132-133
SPA PRODUCTS		160
VIRILE EAU DE COLOGNE SPRAY FOR MEN: L801		161, 163
WAIST CINCHERS		136
WIGS		162

Special thanks to Highest Heel Shoes and Tabu Shoes



25925

25925

CHATEAU MEDALLION STRAPLESS TAPESTRY CORSET

With Charmeuse side panels, slimming boning, and zip-up closure on back. Comes with removable adjustable garters and a G-string. Colors: Emerald, Lavender. Sizes: 32-34-36-38. Shown with No. 219 Gloves and No. 6618 Stockings.

9506

HEAVY SATIN AND LACE CORSET

With slimming boning, adorable lace trim, separating hook front metal busk, lace up ribbon back, adjustable removable garters. Comes with G-string. Colors: Pink, Black. Sizes: 32-34-36-38. Shown with No. 219 Gloves and No. 6618 Stockings, No. 3091 Skirt and No. 27000 Pants.

3091

NET AND RUFFLED BEADED LACE, LAYERED MINI SKIRT Color: Black.

Sizes: S/M, L/XL. Shown with No. 275 Booty Shorts and No. 5006 Stockings.

27000

SATIN 3/4" FITTED PANT WITH SHIRRING

With side pockets, zipper closure and rear pockets. Color: Black. Sizes: 2-4-6-8-10-12.

fabulously feminine





29063

a glint of glamour

29063

**ANGEL & LOVE STRETCH
JACQUARD BUSTIER**

Adorned with sequin and pearl embellished lace on front, chopper bar lace side insets, pleated ruffle hem, slimming boning, and zipper closure on back. Comes with matching embellished lace G-string. Colors: White, Black. Sizes: 32-34-36-38. Shown with No. 6618 Stockings.

25922

STRETCH SATIN CORSET

With sash style bow in front, separating hook front metal busk, lace up ribbon back, removable adjustable garters. Comes G-string. Colors: Red/Black, Emerald Green/Black. Sizes: 32-34-36-38. Shown with No. 219 Gloves, No. 6618 Stockings.

2105

VERA SATEEN SKIRT WITH RUFFLE

With mock button detailing and elasticized waist. Color: Black. Sizes: S-M-L-XL



25922



2105





25929

20059

feeling flirty

25929

**POLKA DOT STRETCH KNIT
BUSTIER**

With slightly padded under wired cups, hook side closure, ribbon lace up back comes with adjustable straps and removable garters and also comes with a G-string. Colors: Black/Pink, Pink/Black. Sizes: 32-34-36-38. Shown with No. 219 Gloves and No. 6618 Stockings.

20059

**SOFT CHARMEUSE
BOXERS**

With button down, fly front. Colors: Black, Cinnamon, Crimson, Spruce Green, Navy, Red, Taupe. Sizes: S-M-L-XL. Comes boxed.

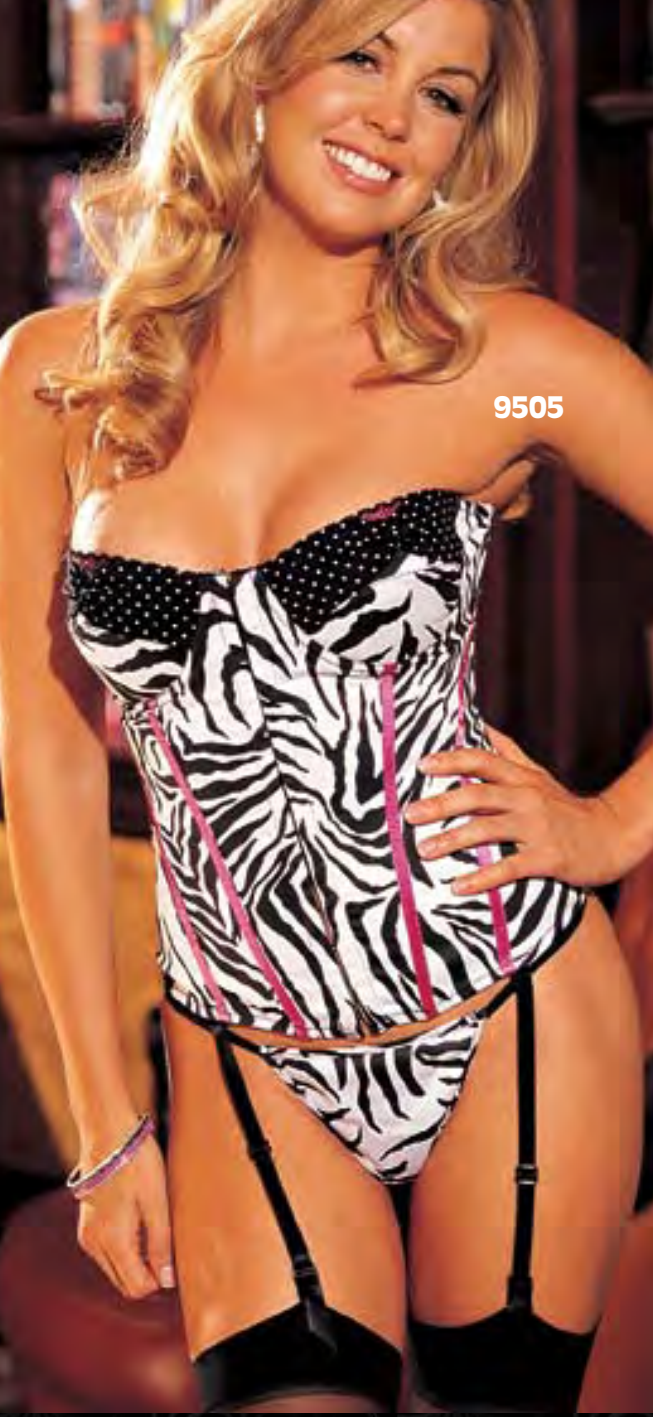
25926

**CASABLANCA STRIPE
TAPESTRY VEST STYLE
CORSET**

With a very sexy décolletage, hook and eye front closure, ribbon lace up back, adjustable halter neck closure and comes with adjustable/removable garters and G-string. Colors: Off White, Pink. Sizes: 32-34-36-38. Shown with No. 5006, 5027 Stockings.

25926





9505



29064



27003



2107

hot in hollywood

9505
ZEBRA AND DOT STRETCH POPLIN BUSTIER

With slightly padded under wired cups, hook and eye front, elastic Shirred back, and removable adjustable garters. Comes with G-string. Color: Black/White. Sizes: 32-34-36-38. Shown with No. 5027 Stockings and No. 2107 Skirt.

2107
POLKA DOT STRETCH POPLIN SKIRT
With zip closure. Colors: Black/White. Sizes: S-M-L-XL.

29064
STRETCH JACQUARD AND STRETCH LACE CORSET

With built in slightly padded under wired cup bra, hook and eye back closure, stretch lace insets at sides for easy wear. Also comes with adjustable straps, removable garters and comes with G-string. Colors: Black/Red, Red/Black. Sizes: 32-34-36-38. Shown with No. 5006 Stockings, No. 219 Gloves.

27003
SATIN & LACE HOT PANT WITH BELT
With stretch lace hem, zipper front and braided belt. Color: Black/Red. Sizes: 2-4-6-8-10-12.

25924
SKULLDUGGERY CORSET
With slimming boning, metal zipper front, lace up ribbon back, adjustable removable garters. Comes with G-string. Colors: Black/Ivory, Ivory/Black. Sizes: 32-34-36-38. Shown with No. 5001 Stockings.

4252
KNIT SHIRRED SKINNY PANTS
Color: Black. Sizes: S-M-L-XL



25924



4252



29047
ALSO AVAILABLE
IN PLUS SIZES

30010

From the best-selling 60th Anniversary
Red Carpet Collection

25915
ALSO AVAILABLE
IN PLUS SIZES



29047

"PEBBLE" CHARMEUSE, STRAPLESS, CORSET *Be the LEADING LADY in your own Hollywood Fantasy when you wear our fabulous fitting and brilliant corset, with hook and eye side opening, waist slimming lace up back, and removable garters. Comes with matching G-string. Colors: Black, Purple, Red. Sizes: 32-34-36-38. Also available in Plus Sizes. Shown with No. 6618, No. 5027 Stockings and No. 219 Gloves. Also shown with Man's Boxer shorts No. 30010.*

30010

SOLID SILK BOXER SHORTS *With button, fly front. Colors: Purple, Grey, Red, Jade, Gold. Sizes: S-M-L-XL. Comes boxed.*

25915

VELVET FLOCKED SATIN AND "EYELASH" LACE STRAPLESS CORSET *With hook and eye side closure. Comes with removable/adjustable garters, plus G-string. Colors: Emerald/Black, Red/Black. Sizes: 32-34-36-38. Also available in Plus Sizes. Shown with No. 5027 Back Seamed Stockings and No. 219 Satin Spandex Gloves.*

vintage-inspired



20317

4252



25917

25917
**HEAVY SATIN STRAPLESS CORSET
AND G-STRING**

With exposed spiral boning, corded lace-up front and back with metal hook busk and elasticized strappy front. Comes with removable, adjustable garters and a G-string. Color: Black. Sizes: 32-34-36-38. Shown with No. 5001 Stockings and No. 219 Gloves.

20317
**MULTI FIBER CHIFFON
LONG SLEEVE BLOUSE**

With elasticized neckline and cuffs. Colors: Black, Spearmint, Petunia Pink. Sizes: S-M-L.

4252
KNIT SHIRRED SKINNY PANTS
Color: Black. Sizes: S-M-L-XL

25907
**SATIN CORSET WITH BREAK AWAY
ZIPPER FRONT**

With slimming boning, lace up back with strong cording lacers and comes with removable, adjustable garters and G-string. Colors: Black, Passion Pink/Black, Red/Black. Sizes: 32-34-36-38. Shown with No. 6618 Stockings and No. 219 Gloves. Also available in Plus Sizes.

4250
**HEAVY SPANDEX SKINNY
STRETCH PANTS WITH ZIPPERS**
With elasticized waist. Color: Black. Sizes: S-M-L-XL

*au courant
corsets*

25907
**ALSO AVAILABLE
IN PLUS SIZES**



4250



25096



25928

25096

25928
STRETCH FLORAL SCROLL
JACQUARD CORSET

With a floating lace covered padded soft cup bra, slimming boning, side lace panels, hook and eye back, adjustable straps, and removable garters. Comes with G-string. Colors: Black/Black, Purple/Black, Red/Black, Bronze/Black. Sizes: 32-34-36-38. Shown with No. 5006 Stockings, No. 25096 Skirt and No. 219 Gloves.

25096
STRETCH FLORAL SCROLL
JACQUARD SKIRT

Colors: Black, Purple, Red, Bronze. Sizes: S-M-L-XL.

29045
STRETCH SATIN AND
MESH CORSET

With multi-ribbon lace up front, slimming contrasting, boning down front and sides, ribbon lace up back, hook and eye side opening, removable garters. Comes with G-string. Colors: Black/Red, Electric Blue/Black, Rose/Black. Sizes: 32-34-36-38. Shown with No. 219 Gloves, No. 6618, 5001 Stockings.

*create a
sensation*

29045





29005

ALSO AVAILABLE
IN PLUS SIZES



25901



always fashionable

29005

SATIN STRAPLESS CORSET

Adorned with pearl-accented Venice trim cascading down the front, hook & eye side opening, slimming lace-up back, removable garters. Comes with G-String. Colors: Black, White. Sizes: 32-34-36-38. Also available in Plus Sizes. Shown with No. 6618 Stockings and No. 219 Gloves.

25901

STRETCH SATIN AND STRETCH LACE CORSET

With a floating under wired, padded BRA embellished with rhinestones, hook & eye back closure with adjustable straps and removable, adjustable garters. Comes with G-string. Colors: Black, Passion Pink. Sizes: 32-34-36-38. Shown with No. 6618, 5027 Stockings and No. 219 Gloves.

29056

TWO-TONE STRETCH LACE AND SHIRRED SPANDEX MESH BUSTIER

With slightly padded under wired cups, ribbon lace up back, adjustable straps with ribbon accent colors and adjustable garters. Comes with G-string. Colors: Black/Hot Pink, Lilac/Purple. Sizes: 32-34-36-38. Also available in Plus Sizes. Shown with No. 5027, 6618 Stockings.

**ALSO AVAILABLE
IN PLUS SIZES
29056**





9378
ALSO AVAILABLE
IN PLUS SIZES



29002
ALSO AVAILABLE
IN PLUS SIZES



9378

BEST-SELLING CORSET *Asian tapestry strapless Corset, slimming boning, lace-up back, easy access hook side closure, removable, adjustable garters. Comes with G-string. Colors: Black, Pink, Purple. Sizes: 32-34-36-38. Plus Sizes also, X9378: 38-40-42-44. Shown with Stockings No. 6629 and Gloves No. 219.*

29002

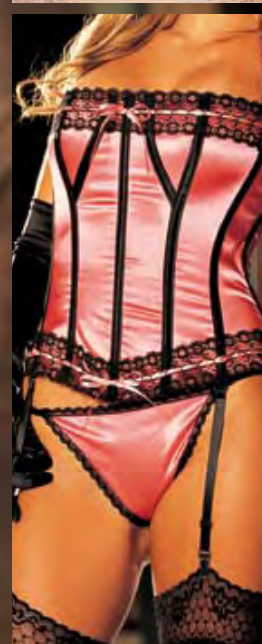
SEXY, SATIN BUSTIER *With multi-grommet ribbon lace-ups in front and back, slightly padded underwire cups, adjustable straps, hook side opening, removable garters. Comes with G-String. Colors: Pink, Black, Purple. Sizes: 32-34-36-38. Also available in Plus Sizes. Shown with No. 5541 Stockings, No. 6618 Stockings, and No. 219 Gloves.*

29000

STRETCH SATIN CORSET *With contrasting, slimming boning, lace trim, hook and eye adjustable back, adjustable straps and removable garters. Colors: Black/Pink, Bright Rose/Black, Pink/White Purple Garnet/Black. Sizes: 32-34-36-38. Also available in Plus Sizes. Shown with Stockings No. 6618 and Gloves No. 219.*

29000
ALSO AVAILABLE
IN PLUS SIZES

*quintessentially
sexy*



bravo for bustiers!

59014

51058

ALSO
AVAILABLE IN
PLUS SIZES

59011



59014
STRETCH SATIN POLKA DOT
BUSTIER

With ribbon "FAN" accent at bust with slightly padded under wired cups, spandex mesh back with hook & eye back closure and adjustable straps. Colors: Black/Pink, White/Black. Sizes: 32-34-36-38. Shown with No. 51058 Thong, No. 6618 Stockings.

51058
POLKA DOT STRETCH
CHARMEUSE THONG *With lace and ribbon trim. Colors: Black/Pink, White/Black. Sizes: S-M-L-XL.*

59011
GANGSTER STRIPE SPANDEX
AND MESH BUSTIER
With sexy, shelf cups, adorable little, ribbon lace ups, hook & eye back closure, adjustable straps and garters. Comes with G-string. Colors: Black/Pink, Red/Black. Sizes: 32-34-36-38. Also available in Plus Sizes. Shown with No. 6618 Stockings and No. 219 Gloves.

29020
VICTORIAN STRETCH JACQUARD
CORSET
With separate, slightly padded under-wired Bra trimmed with stretch lace, waist slimming hook & eye back, mock ribbon lace-up trim and has adjustable straps, and removable garters. Comes with G-string. Colors: Black/Black, Red/Black, Denim/Black. Sizes: 32-34-36-38. Shown with No. 6629 Stockings and No. 219 Gloves.

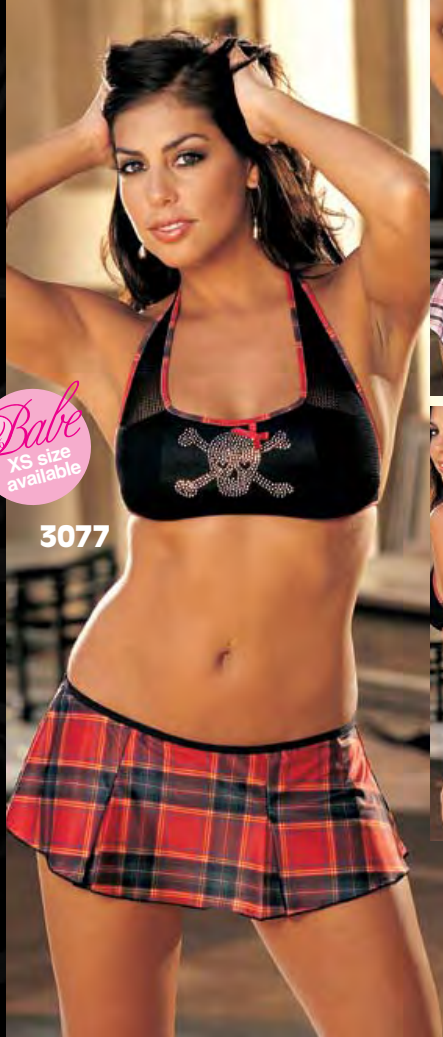
27001
SATIN LAYERED SKIRT
Comes with belt and zip back closure. Color: Black/Red. Sizes: 2-4-6-8-10-12.



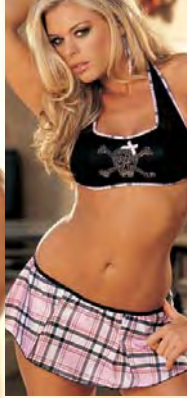


9503
ALSO AVAILABLE
IN PLUS SIZES

100% *Babe*
XS size
available



3077



100% *Babe*
XS size
available



3076



9503

SKULLS AND PLAID CORSET

Our Satin and Stretch Plaid Corset has a metallic studded Skull pressed on the front with sexy lace up sides, hook and eye closure back and comes with removable, adjustable Chain garters and G-string. Colors: Pink/Black, Red/Black. Sizes: 32-34-36-38. Also available in Plus Sizes. Shown with No. 5001 Stockings.

3077

SPANDEX, STRETCH FISHNET AND STRETCH GINGHAM 3

PIECE SET *With a metallic studded SKULL and CROSSBONES with halter tie neck and open low back on the CROP TOP and MINI-MINI SKIRT comes with an elasticized waist and a G-STRING. Colors: Black/Pink, Black/Red. Sizes: XS-S-M-L.*

TO SEE MORE OF OUR 100% BABE COLLECTION, REQUEST OUR 100% BABE CATALOG.

3076

SPANDEX, FISHNET AND STRETCH GINGHAM GARTERED CHEMISE

With a metallic studded SKULL and CROSSBONES on the front, halter tie neck, open back with hook closure and comes with adjustable garters and G-string. Colors: Black/Pink, Black/Red. Sizes: XS-S-M-L. Shown with No. 5001 Stockings.

29038

STRETCH KNIT AND "EYELASH" LACE TRIM BUSTIER

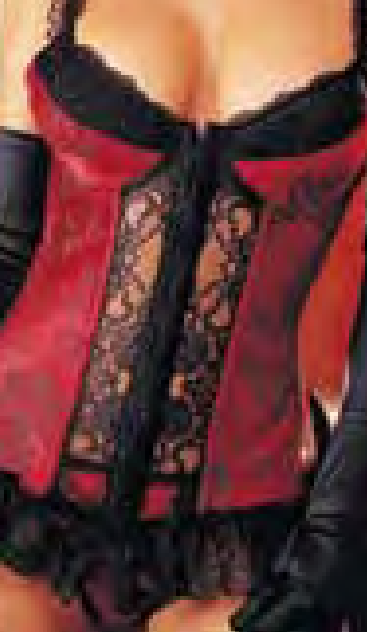
With a sexy key hole front, ribbon lace up front and hook and eye back closure. Adjustable straps, removable garters and matching G-string also included. Colors: Black/Hot Pink, Pink Leopard, Leopard. Sizes: 32-34-36-38. Also available in Plus Sizes. Shown with Stockings No. 6618 and No. 6629.



animal attraction

29038
ALSO AVAILABLE
IN PLUS SIZES





9393
ALSO AVAILABLE
IN PLUS SIZES

*richly
detailed*

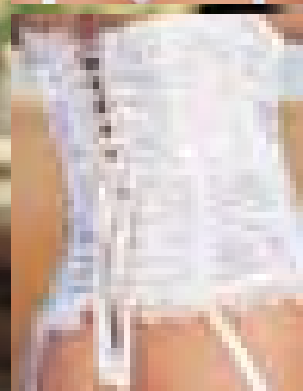
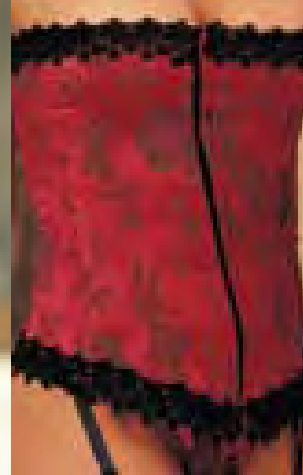
9393
**SATIN TAPESTRY
FLOWERED JACQUARD
LONG-LINE BUSTIER**

*With lightly padded
underwire cups, hook and eye
front, body controlling side,
front, and back boning, plus
a waist cinching lace-up
back and adjustable garters.
Comes with matching G-
string. Colors: Black, Ivory,
Red, Royal. Sizes: 32-34-
36-38. Plus Sizes also,
X9393: 38-40-42-44.
Shown with No. 6618
Stockings, No. 219 Gloves.*

9001
**STUNNING FLORAL
TAPESTRY STRAPLESS
CORSET**

*With gorgeous Venice trim,
hook and eye front, waist
cinching lace-up back,
removable, adjustable garters.
Comes with Thong Panty.
Colors: Black, Candlelight,
Red/Black, Violet/Black.
Sizes: 32-34-36-38.
Shown with No. 5540
Stockings, No. 219 Gloves.
Plus Sizes also, X9001: 38-
40-42-44; and XX9001:
46-48-50.*

9001
**ALSO AVAILABLE
IN PLUS SIZES**





59013
51049

the call of the wild

ALSO AVAILABLE
IN PLUS SIZES
8997

59013

**ANIMAL PRINT STRETCH SATIN AND
EYELASH LACE BUSTIER**

With build in underwired bra, stretch mesh back with hook and eye closure, with adjustable straps and removable adjustable garters. Colors: Pink, Natural, Turquoise. Sizes: 32-34-36-38. Shown with No. 51049 Thong and No. 5026 Stockings.

51049

**ANIMAL PRINT STRETCH SATIN
AND EYELASH LACE THONG**

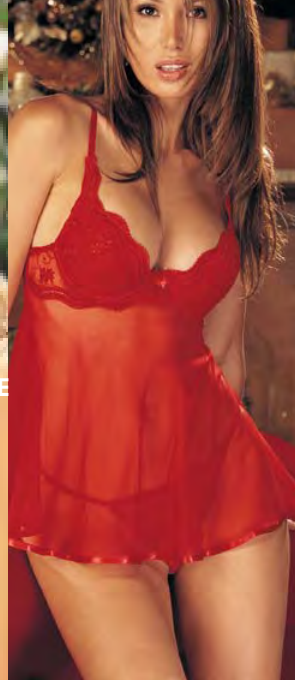
With rhinestone buckle. Colors: Pink, Natural, Turquoise. Sizes: S-M-L-XL.

8997

**SATIN TAPESTRY FLOWERED
JACQUARD STRAPLESS CORSET**

With contrasting boning, Venice trim, hook & eye front and waist slimming lace-up back, removable garters. Comes with G-String. Colors: Pink/Black, Ivory/Black, Violet/Black, Royal/Black. Sizes: 32-34-36-38. Also available in Plus Sizes. Shown with No. 219 Gloves and No. 5540 Stockings.





ALSO AVAILABLE
IN PLUS SIZES
3175

ALSO AVAILABLE
IN PLUS SIZES
331

622

10

331

SCALLOPED EMBROIDERY SHELF BRA With uplifting underwire support, adjustable straps and back. Colors: Black, Red, White. Sizes: 32-34-36-38. Also available in Plus Sizes.

622

SCALLOPED EMBROIDERY GARTERBELT With adjustable back and garters. Colors: Black, Red, White. One Size.

10

SCALLOPED EMBROIDERY CROTCHLESS THONG PANTY Colors: Black, Red, White. One Size. Shown with Gloves No. 239.

3175

SCALLOPED EMBROIDERY AND SHEER NET BABY DOLL With slightly padded underwire cups, adjustable straps. Comes with G-string. Colors: Black, Red, White. Sizes: S-M-L. Plus Sizes also, X3175: 1X-3X.

9407

PADDDED PUSH-UP BUSTIER Dramatically increases your bust size. Removable liquid push-up-pads that form fit to your bust. Bustier also features hook and eye back closure, adjustable straps, removable garters. Comes with G-string. Colors: Black, Red, White. Sizes: 32-34-36-38. Shown with No. 6618 Stockings.

show off a little

9407





20144

20146



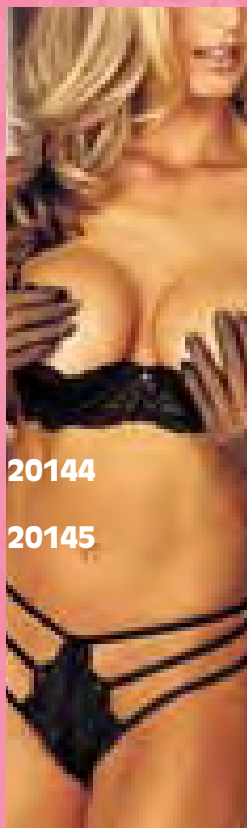
20393

3 PC SET



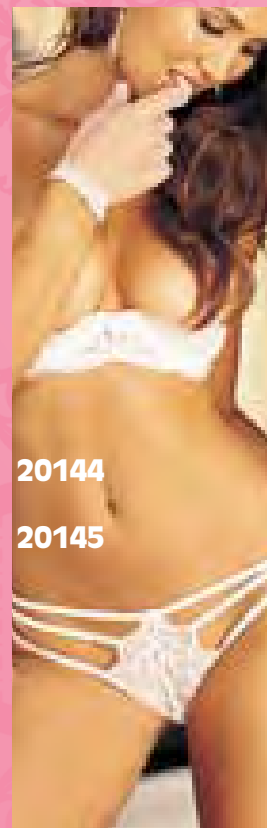
20144

20145



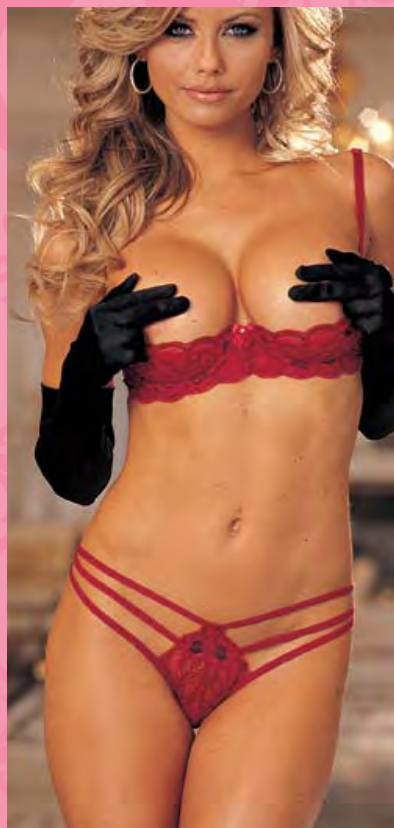
20144

20145



20144

20145





45015

45018

20144

STRETCH LACE SHELF BRA Adjustable straps and hook back. Colors: Black, Pink, Purple Garnet, White. Sizes: 32-34-36-38. (Fits B-C cups). Shown with No. 5027 Stockings and No. 239 Gloves.

20146

STRETCH LACE GARTERBELT Hook back, adjustable garters. Colors: Black, Pink, Purple Garnet, White. Sizes: One Size.

20145

STRETCH LACE STRAPPY THONG Colors: Black, Pink, Purple Garnet, White. One Size.

20393

TWO TONE LACE 3 PIECE SET Set includes Stretch Lace under wired SHELF BRA with hook back and adjustable straps, GARTERBELT with adjustable back and garters and a sexy, strappy THONG PANTY. Colors: Black/Red, Red/Black. Sizes: 32-34-36-38. Shown with No. 219 Gloves, No. 5006 Stockings.

45015

LACE OVERLAY ON STRETCH SATIN UNDER WIRED BRA With hook and eye back closure and adjustable straps. Colors: Black/Pink, White/Blue. Sizes: 32-34-36-38 (fits B/C cups). Shown with No. 45018 Skirtini, No. 6618 Stockings. Also, coordinates with thong panty No. 45016.

45018

LACE OVERLAY STRETCH SATIN SKIRTINI With ribbon bows at sides. Colors: Black/Pink, White/Blue. Sizes: S-M-L-XL.



51057

51058

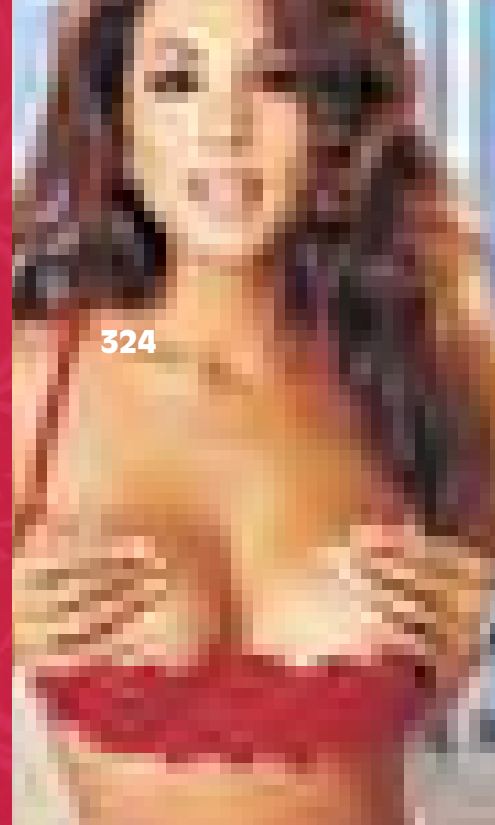
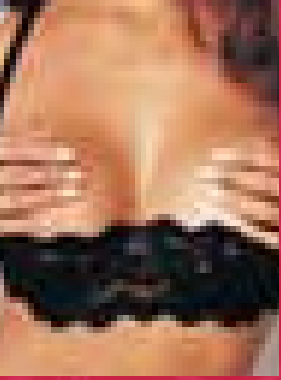
51057

STRETCH POLKA DOT SATIN BRA With slightly padded under wired cups, ribbon fan accent and has adjustable straps and Spandex mesh, hook back closure. Colors: Black/Pink, White/Black. Sizes: 32-34-36-38(Fits B/C Cups). Shown with No. 51058 Thong panty.

51058

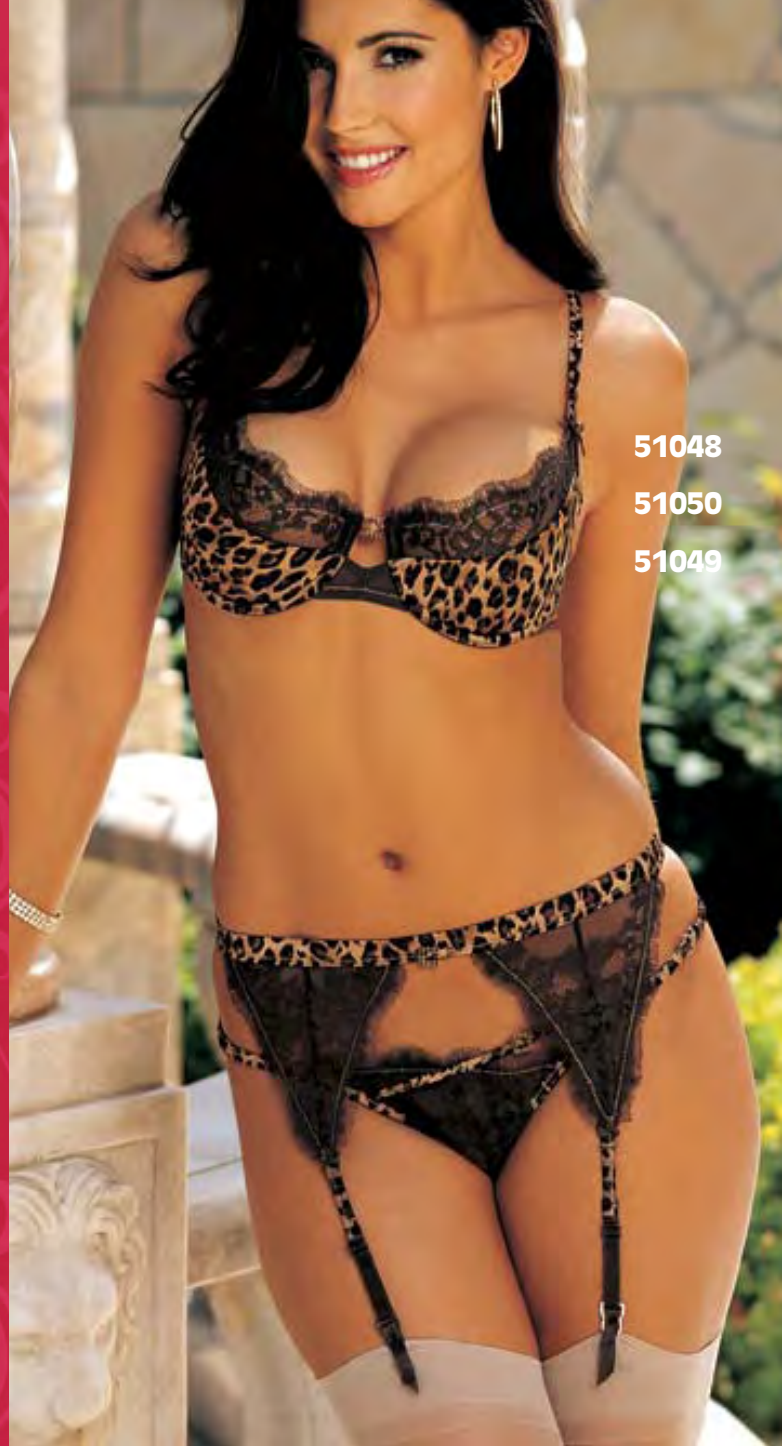
STRETCH POLKA DOT STRETCH CHARMEUSE THONG With lace and ribbon trim. Colors: Black/Pink, White/Black. Sizes: S-M-L-XL.

a guaranteed wow



324

324
CHOPPER BAR SHELF BRA With strategic boning for uplifting cleavage, adjustable straps and back. Colors: Black, Red, White. Sizes: 32-34-36-38 (Fits A,B,C cups). Plus Sizes also, X324: 38-44.



51048

51050

51049



369

369
LACE UNDERWIRE OPEN TIP BRA Supports breasts on fiber filled shelf. Adjustable straps and back. Colors: Black, Red, White. Sizes: 32-34-36-38. (Fits B-C Cups).



*delight
the senses*

51048

ANIMAL PRINT STRETCH SATIN AND EYELASH LACE BRA

With underwire cups, adjustable straps, and hook and eye closure on back. Colors: Pink, Natural, Turquoise. Sizes: 32-34-36-38. Shown with No. 51049 Thong, No. 51050 Garter Belt and No. 5026 Stockings.

51050

ANIMAL PRINT STRETCH SATIN AND EYELASH LACE GARTER BELT

With removable adjustable garters. Colors: Pink, Natural, Turquoise. Sizes: S/M-L/XL.

51049

ANIMAL PRINT STRETCH SATIN AND EYELASH LACE THONG

With rhinestone buckle. Colors: Pink, Natural, Turquoise. Sizes: S-M-L-XL.

20383

EMBELLISHED LACE AND NET BRIDAL BABY DOLL

With embellished molded underwired padded push up cups, romantic flounces down skirt, stretch net back, and adjustable shoulder straps. Comes with G-string. Colors: White, Black. Sizes: S-M-L-XL.





our sexiest shades

20366

20366

CHIFFON BABYDOLL

With beautiful lace cups and cut out lace down sides, low back with criss-cross tie-up straps. Comes with G-string. Colors: Fall Violet, Spring Green, Winter Berry. Sizes: S-M-L-XL.

20365

CHARMEUSE CHEMISE

With exquisite overlapping gorgeous lace. Criss-cross adjustable straps with low back. Colors: Fall Violet, Spring Green, Winter Berry. Sizes: S-M-L-XL.





20367



*Introducing Brandi Reed,
winner of
Shirley's Sexy Model Search*

**20367
CHIFFON COAT/ SLEEP
SHIRT**

With beautiful scalloped lace. Ties at sleeves and front. Comes with G-string. Colors: Fall Violet, Spring Green, Winter Berry. Sizes: S/M, L/XL.

**20364
CHARMEUSE AND
CHIFFON LONG GOWN**

With beautiful gorgeous lace. Criss-cross adjustable straps on low sexy back. Colors: Fall Violet, Spring Green, Winter Berry. Sizes: S-M-L-XL

*the new
basics*

**20364
20367**





20386

super flirty

20386
STRETCH DOT LACE
2 PIECE SET

Set includes a softly padded CROP TOP with under-wired cups, ruffle trim, adjustable shoulder straps, and hook and eye back closure. SKIRTINI comes with ruffled hem, attached thong, & removable adjustable garters. Colors: Black, Passion Pink. Sizes: S-M-L-XL. Shown with No. 5006 and No. 5027 Stockings.

20387
STRETCH DOT LACE
CHEMISE

Has softly padded under-wired cups, adjustable shoulder straps, and hook and eye back closure. Comes with removable adjustable garters and a G-string. Colors: Black, Passion Pink. Sizes: S-M-L-XL. Shown with No. 5027 and No. 5006 Stockings.





25929

25098



25929
POLKA DOT STRETCH KNIT BUSTIER

Trimmed in ruffled tulle, slimming boning, under wire cups, lace-up back, adjustable shoulder straps, and hook and eye side closure. Comes with removable adjustable garters and a G-string. Colors: Black/Pink, Pink/Black. Sizes: 32-34-36-38. Shown with No. 5006 Stockings.

25098
POLKA DOT STRETCH KNIT BRA, SKIRTINI, AND G-STRING SET

Top has softly padded under-wired bra, open back, and adjustable shoulder straps. Skirt comes with removable adjustable garters and a G-string. Colors: Black/Pink, Pink/Black. Sizes: S-M-L-XL. Shown with No. 5006 and No. 5027 Stockings.

25097
POLKA DOT STRETCH KNIT CHEMISE

With softly padded under wired bra, adjustable straps and hook and eye closure on back. Colors: Black/Pink, Pink/Black. Sizes: S-M-L-XL.

*have fun
with fashion*



25097





tribal chic

25067
**STRETCH MESH LEOPARD
PRINT TEDDIETTE WITH
OSTRICH FEATHERS**

*With a strappy elastic back,
removable adjustable shoulder
straps, hook and eye closure
and adjustable garters. Colors:
Red, Hot Pink, Purple. Sizes:
S-M-L-XL. Shown with No.
5027 Stockings.*

477
**ITALIAN MICRO-FIBER
SPANDEX "HOT" SHORTS**

*Shiny and soft. Colors: Black,
Copper, Turquoise, White,
Purple, Red. Sizes: S-M-L-
XL. Comes boxed.*

25065
**STRETCH MESH LEOPARD
PRINT AND OSTRICH
FEATHER 3 PIECE SET**

*Set includes ostrich feather
trimmed crop top with a
stretch mesh back, and
adjustable shoulder straps,
skirt with satin bows and
G-string. Colors: Red, Hot
Pink, Purple. Sizes: S-M-L-
XL.*



25065



477





25066





9505



2108



2107



25066
STRETCH MESH LEOPARD PRINT CHEMISE WITH OSTRICH FEATHERS
With adjustable shoulder straps, ruffled net skirt and a satin bow under bust. Comes with G-string. Colors: Red, Hot Pink, Purple. Sizes: S-M-L-XL.

9505
ZEBRA AND DOT STRETCH POPLIN BUSTIER *With slightly padded under wired cups, hook and eye front, elastic Shirred back, and removable adjustable garters. Comes with G-string. Color: Black/White. Sizes: 32-34-36-38. Shown with No. 5027 Stockings and No. 2107 Skirt.*

2107
POLKA DOT STRETCH POPLIN SKIRT *With zip closure. Colors: Black/White. Sizes: S-M-L-XL.*

2108
ZEBRA AND DOT 2 PIECE SET *Set includes bra with softly padded under wired cups, adjustable straps, hook and eye closure on back and panty. Color: Black/White. Sizes: S-M-L-XL.*

untamed beauty



20389



20389

ORCHID EMBROIDERY CHARMEUSE AND NET BABY DOLL Has softly padded under-wired cups, sheer net skirt and adjustable shoulder straps. Comes with embroidered G-string. Colors: Burgundy, Navy. Sizes: S-M-L-XL.

20390

ORCHID EMBROIDERY CHARMEUSE 3 PC SET Set includes softly padded under-wired BRA with adjustable shoulder straps and strappy hook back closure, embroidered SKIRTINI with removable adjustable garters and G-STRING. Colors: Burgundy, Navy. Sizes: S-M-L-XL.

20059

SOFT CHARMEUSE BOXERS With button down, fly front. Colors: Black, Cinnamon, Crimson, Spruce Green, Navy, Red, Taupe. Sizes: S-M-L-XL. Comes boxed.

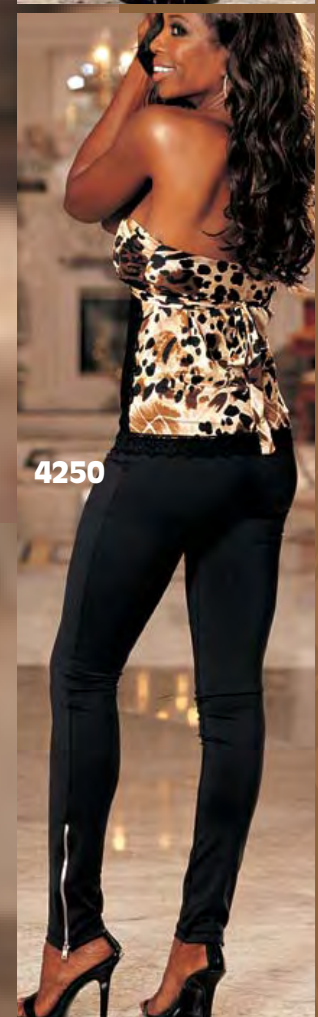


20390

20059

*prelude
to a tryst*





fun and feline

25091

KNIT TOP With slightly padded push up cups, beaded halter straps, shirred bust, and side lace panels. Ties in back for greater fit. Colors: Black, Hot Pink Print, Natural Print. Sizes: S-M-L-XL. Comes with G-string

4250

SKINNY STRETCH PANTS WITH ZIPPERS
Color: Black. Sizes: S-M-L-XL

25093

KNIT CHEMISE With gathered front, beaded necklace, and halter neck ties. Colors: Black, Hot Pink Print, Natural Print. Sizes: S-M-L-XL.

25094

KNIT THONG With stretch lace waistband. Colors: Black, Hot Pink Print, Natural Print. Sizes: S/M, L/XL.

25095

KNIT BOY SHORT Colors: Black, Hot Pink Print, Natural Print. Sizes: S-M-L-XL.







25084



25083



25092

LONG KNIT GOWN With slightly padded push up cups, beaded halter straps, shirred bust, and side lace panels. Ties in back for greater fit. Colors: Black, Hot Pink Print, Natural Print. Sizes: S-M-L-XL.

25084

CUTESY RIBBON AND LACE 2 PIECE SET Top has slightly padded under wired cups, ruffled hem, adjustable shoulder straps, and hook and eye closure. Panty has lace and ribbon ruffle rear back. Color: Black. Sizes: S-M-L-XL.

25083

CUTESY RIBBON AND LACE BABY DOLL Has slightly padded under wired cups, stretch mesh back with hook and eye closure, sheer net skirt, adorable lace on hemline and adjustable shoulder straps. Comes with G-string. Color: Black. Sizes: S-M-L-XL.

adorable anytime



1092



1092

TWO TONE LACE AND STRETCH MESH CHEMISE

With under wired convertible cups. Sexy lace up back and comes with adjustable straps, removable garters and G-string. Colors: Black/Red, Red/Black. Sizes: S-M-L-XL. Shown with No. 5006 Stockings, No. 219 Gloves.



20393
3 PC SET



20393

TWO TONE LACE 3 PIECE SET *Set includes Stretch Lace under wired SHELF BRA with hook back and adjustable straps, GARTERBELT with adjustable back and garters and a sexy, strappy THONG PANTY. Colors: Black/Red, Red/Black. Sizes: 32-34-36-38. Shown with No. 219 Gloves, No. 5006 Stockings.*

25085

STRETCH MESH AND "SEXY" LACE CHEMISE *Demi-bra has slightly padded cups, rhinestone adornments on the adjustable shoulder straps, strappy back, and hook and eye closure. Trimmed with "Sexy" lace across top of bra and hem. Includes removable adjustable garters and G-String. Color: Black. Sizes: S-M-L-XL.*

25086

STRETCH MESH AND "SEXY" LACE BRA & BOY SHORT SET *Demi-bra has slightly padded, under wired cups, strappy back, hook and eye closure, and S-E-X-Y rhinestone adornments on the adjustable shoulder straps. Trimmed with "SEXY" lace across top of bra and hem of boy shorts. Color: Black. Sizes: S-M-L-XL. Shown with No. 219 Gloves.*

25088

STRETCH MESH AND "SEXY" LACE GARTER BELT *Includes removable adjustable garters with rhinestone adornments and trimmed with "SEXY" lace. Color: Black. Size: O/S.*

25089

STRETCH MESH AND "SEXY" LACE BOY SHORT *Trimmed with "SEXY" lace across top waistband and hem. Color: Black. Sizes: S-M-L-XL.*



*feel
flamboyant*





25070

SATIN & CHAIN 2 PIECE SET Set includes has softly padded under wire bra with adjustable chain shoulder straps, hook and eye closure on back and a strappy G-string. Colors: Black, Red. Sizes: S-M-L-XL.

25071

SATIN PLEATED MINI SKIRT With chain accents along the waistband, hook and eye closure and removable chain garters. Colors: Black, Red. Sizes: S-M-L-XL. Shown with No. 5001 Stockings.

25068

SATIN & CHAIN CHEMISE Has softly padded under-wired cups, adjustable shoulder straps, and hook and eye back closure. Comes with removable adjustable garters and a G-string. Colors: Black, Red. Sizes: S-M-L-XL. Shown with No. 5001 Stockings.



25068





25072

*slinky and
skintight*

25072
**SUPER SEXY EYELASH LACE
STRAPPY CHEMISE**

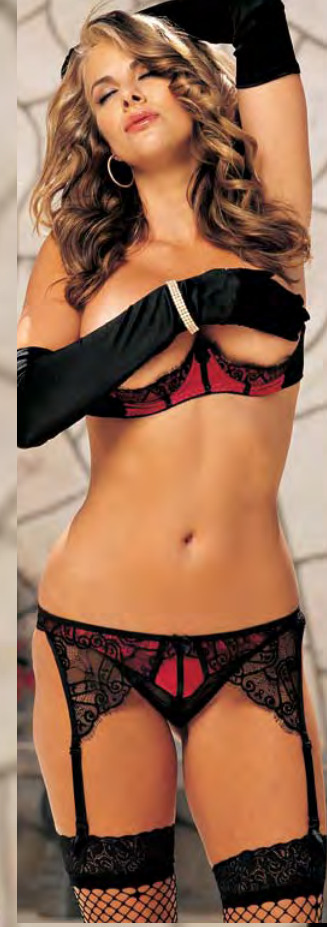
*With Satin lined cups, strappy open
back and has adjustable straps and
garters. Comes with G-string. Colors:
Black/Hot Pink, Black/Red. Sizes:
S-M-L-XL. Shown with No. 5001
Stockings and No. 219 Gloves.*

25063
**EYELASH LACE AND SATIN OPEN
BUST 2 PIECE SET**

*Set includes open bust BRA with
adjustable straps and hook back. And
GARTINI has an open front and
adjustable garters. Colors: Black/Hot
Pink, Black/Red. Sizes: 32-34-36-
38. Shown with No. 219 Gloves and
No. 5001 Stockings.*



25063





20379
CHARMEUSE AND NET BRA AND SKONG SET Set includes a softly padded under wired bra, with adjustable straps and hook and eye closure on back. Skong has slimming beading lace down front of skirt with an attached thong. Colors: Black/Red, Passion Pink/Black. Sizes: S-M-L-XL

20378
CHARMEUSE AND NET BABYDOLL Has slightly padded under wired cups, stretch mesh back with hook and eye closure, ruffles on hemline and adjustable shoulder straps. Comes with G-string. Colors: Black/Red, Passion Pink/Black. Sizes: S-M-L-XL. Also Available in Plus Sizes.



ALSO AVAILABLE
IN PLUS SIZES
20378



looks you'll love



59014

51058



51057

51058

59014

STRETCH SATIN POLKA DOT BUSTIER

With ribbon "FAN" accent at bust with slightly padded under wired cups, spandex mesh back with hook & eye back closure and adjustable straps. Colors: Black/Pink, White/Black. Sizes: 32-34-36-38. Shown with No. 51058 Thong, No. 6618 Stockings.

51057

STRETCH POLKA DOT SATIN BRA

With slightly padded under wired cups, ribbon fan accent and has adjustable straps and Spandex mesh, hook back closure. Colors: Black/Pink, White/Black. Sizes: 32-34-36-38(Fits B/C Cups). Shown with No. 51058 Thong panty.

51059

ADORABLE STRETCH POLKA DOT CHARMEUSE AND LACE CHEMISE

With cute ribbon "fan" accents on slightly, padded, under wired, cups, sexy ribbon lace up back and has adjustable straps. Colors: Black/Pink, White/Black. Sizes: 32-34-36-38(Fits B/C Cups). Shown with No. 51058 Thong.

51058

POLKA DOT STRETCH CHARMEUSE THONG *With lace and ribbon trim. Colors: Black/Pink, White/Black. Sizes: S-M-L-XL.*

*full-on flirt
mode*

51059

51058





30114
FITS PLUS SIZES
AS WELL



25002
ALSO AVAILABLE
IN PLUS SIZES



*be romantic
every day*

30114

STRIPED FLUFFY ROBE

With a shiny/dull stripe for more flashy sex appeal and comes with the ultimate in softness, wide lapel, turn over cuffs, side pockets on each side and self tie belt. Colors: Hot Pink, Aqua, Coral, Purple Garnet. Sizes: OS, XL.

25002

**BEAUTIFUL FLORAL VINE
STRETCH LACE CHEMISE**

With a built in, foam padded, under wired, BRA with a hook back closure, adjustable straps and enticing, delicate ribbon lace-ups that reveal sheer, sensual side panels. Comes with G-string. Colors: Black/Pink, Pink/Red. Sizes: S-M-L-XL. Also Available in Plus Sizes.

25003

**EXCITING FLORAL AND VINE
STRETCH LACE GARTERED
THONG TEDDY**

With a built in, foam padded, under wired BRA with a hook back closure, adjustable straps and adorable, delicate ribbon lace ups on either side plus removable garters. Colors: Black/Pink, Pink/Red. Sizes: S-M-L-XL. Shown with No. 5027 Stockings.

25003





*lovely
in lilac*

20357

20359
ALSO AVAILABLE
IN PLUS SIZES



20357
TWO TONE STRETCH LACE 2 PIECE SET
Set includes a slightly padded, under wired cup CROP TOP with spandex mesh back with hook back closure and adjustable straps, and SKONG with stretch lace framing the sheer mesh skirt with attached thong. Colors: Black/Hot Pink, Lilac/Purple. Sizes: S-M-L-XL.

20359
TWO TONE STRETCH LACE AND SPANDEX MESH CHEMISE
With slightly padded under wired cups, hook back closure, adjustable straps with exciting, contrasting ribbon trim and sexy side shirring to give a very flirtatious look. Comes with G-string. Colors: Black/Hot Pink, Lilac/Purple. Sizes: S-M-L-XL. Also Available in Plus Sizes.



ALSO AVAILABLE
IN PLUS SIZES
29056



20358



29056
TWO-TONE STRETCH LACE AND SHIRRED SPANDEX MESH BUSTIER

With slightly padded under wired cups, hook & eye back closure, adjustable straps with ribbon accent colors and garters . Comes with G-string. Colors: Black/Hot Pink, Lilac/Purple. Sizes: 32-34-36-38. Also Available in Plus Sizes. Shown with No. 5027, 6618 Stockings.

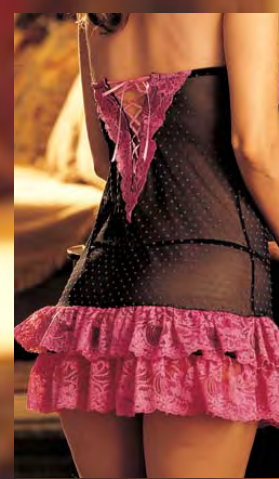
20358
TWO TONE LACE AND SPANDEX MESH TEDDY

With sexy split cups openings, bare mid-drift, adjustable straps and a thong back. Colors: Black/Hot Pink, Lilac/Purple. Sizes: S-M-L-XL.

25018
CUTE POLKA DOT STRETCH MESH AND LACE FLIRTY CHEMISE

With slightly padded under wired cups, sexy lace up back, ruffles of lace hem, removable and adjustable halter neck strap. Comes with G-string. Colors: Black/Pink, Pink/Red. Sizes: S-M-L-XL.

25018



lounge in lace

*glamour girl
looks*

20351





20356

20351

VINE PATTERNED STRETCH JACQUARD GARTERED CHEMISE

With spandex mesh sides, under wired demi cups, sexy lace up back, adjustable straps and removable garters. Colors: Black/Black, Red/Black. Sizes: S-M-L-XL. Shown with No. 6618 Stockings and No. 219 Gloves.

20356

ANIMAL PRINT STRETCH KNIT AND LACE 3 PIECE SET

Set includes an under wired BRA TOP with ruffles of lace, adjustable straps and hook back closure. THONG panty is also adorned with lace ruffles as well as the matching stay up STOCKINGS. Colors: Leopard, Pink Leopard. Sizes: S-M-L.





29038
ALSO AVAILABLE
IN PLUS SIZES

29038
STRETCH KNIT AND "EYELASH" LACE TRIM BUSTIER *With a sexy key hole front, ribbon lace up front and hook & eye back closure. Adjustable straps, removable garters and matching G-string also included. Colors: Black/Hot Pink, Leopard, Pink Leopard. Sizes: 32-34-36-38. Also available in Plus Sizes. Shown with No. 6618 stockings and No. 219 Gloves*

20295
STRETCH KNIT AND "EYELASH" LACE TRIM CHEMISE *With a fit and flair cut to flatter the figure, a cute ribbon tie front and adjustable straps. Colors: Black/Hot Pink, Pink Leopard/Black, Leopard. Sizes: S-M-L. Also available in Plus Sizes. (This chemise coordinates nicely with Bustier No. 29038 shown at left.)*

ferociously sexy



20295
ALSO AVAILABLE
IN PLUS SIZES





retro redefined

20281



20258
ALSO AVAILABLE
IN PLUS SIZES



20281
SEXY STRETCH WOVEN PIN STRIPE EMBROIDERY AND STRETCH MESH CORSET STYLE CHEMISE *With under wired cups, adjustable straps, ribbon lace-up back. Comes with removable and adjustable garters. Colors: Black/White, Pink/Black. Sizes: 32-34-36-38. Shown with No. 6618 Stockings.*

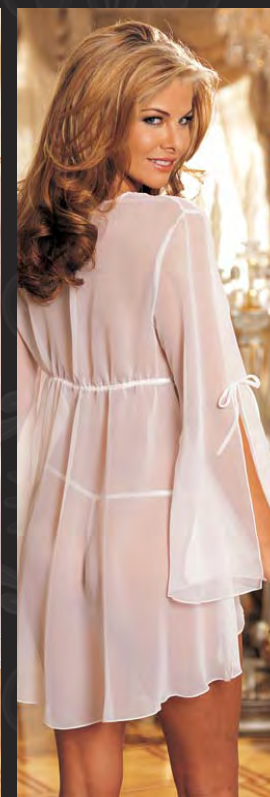
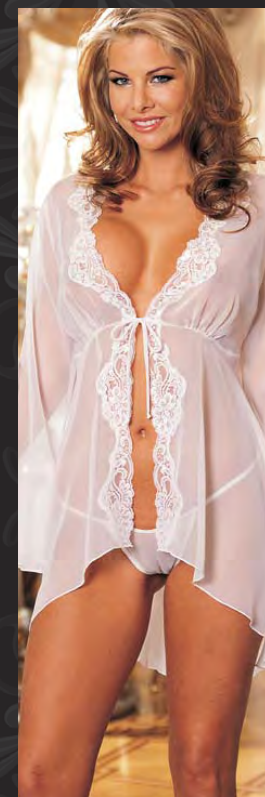
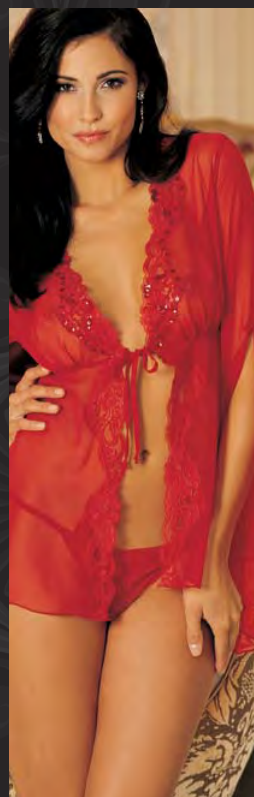
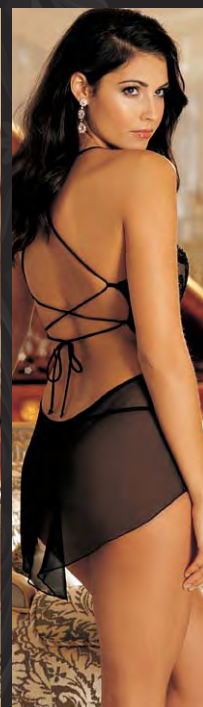
20258
MULTI FIBER CHIFFON AND STRETCH LACE BABY DOLL *With halter tie neck, waist slimming bow tie back, full hankie hem skirt. Comes with G-string. Colors: Iris, Black, Petunia Pink. Sizes: S-M-L. Also available in Plus Sizes.*



20366E



20367E
ALSO AVAILABLE
IN PLUS SIZES



20366E

CHIFFON BABYDOLL

With embellished lace cups and cut out lace down sides, low back with criss-cross tie-up straps. Comes with G-string. Colors: Black, Cherry Red, White. Sizes: S-M-L-XL.

20367E

**CHIFFON COAT/
SLEEP SHIRT**

With embellished scalloped lace. Ties at sleeves and front. Comes with G-string. Colors: Black, Cherry Red, White. Sizes: S/M, L/XL. Also available in Plus Sizes.

20365E

CHARMEUSE CHEMISE

With exquisite overlapping embellished lace. Criss-cross adjustable straps with low back. Colors: Black, Cherry Red, White. Sizes: S-M-L-XL. Also available in Plus Sizes.

30010

SOLID SILK BOXER SHORTS

With button, fly front. Colors: Purple, Grey, Red, Jade, Gold. Sizes: S-M-L-XL. Comes boxed.



*catch
his eye*





20059



20364E



From the best-selling 60th Anniversary
Red Carpet Collection

25062
ALSO AVAILABLE
IN PLUS SIZES



20364E
CHARMEUSE AND CHIFFON LONG GOWN *With beautiful embellished lace. Criss-cross adjustable straps on low sexy back. Colors: Black, Cherry Red, White. Sizes: S-M-L-XL Shown with No. 219 Gloves and No. 20367E Robe.*

20059
SOFT CHARMEUSE BOXERS *With button down, fly front. Colors: Black, Crimson, Cinnamon, Spruce Green, Navy, Red, Taupe. Sizes: S-M-L-XL. Comes boxed.*

25062
CHARMEUSE AND OSTRICH FEATHER LONG DRESSING GOWN *Fitted at waist, plunging neckline and cuffs trimmed in ostrich feathers. With hook closure and wide self-tie belt. Colors: Black, Cherry Red. Sizes: S/M, L/XL. Also available in Plus Sizes.*

instant icons



30106

30106
SHEER AND SEXY,
OUR SILK CHIFFON
CHEMISE

Has open sides, adjustable straps. Comes with G-string. Colors: Aqua, Purple Garnet, Black, Hot Lime, Hot Pink. Sizes: S-M-L.

30107
COLORFUL BUTTERFLIES
ARE DEPICTED ON OUR
PRINTED BURNOUT SILK
CHEMISE

Embellished with brilliant sequins. Open sides and adjustable straps. Comes with G-string. This chemise is a delight to wear. Colors: Red, Black, Ivory, Royal. Sizes: S-M-L-XL. Also available in Plus Sizes.

30107
ALSO AVAILABLE
IN PLUS SIZES



our most stylish silks



low-maintenance looks

3967
SOFT AND SHINY LACE
LONG GOWN

With scalloped, open front, adjustable straps. Comes with G-String. Colors: Purple Garnet, Black, Canary Yellow, Jewel Blue, Ruby Red. Sizes: S-M-L.

30075
SILK CHIFFON LONG SLEEVE
TAILORED SHIRT

Trimmed with solid silk collar and cuffs with button-down front. Colors: Aqua, Purple Garnet, Black, Hot Lime, Hot Pink, White. Sizes: S-M-L-XL. Also available in Plus Sizes. Shown with No. 30080 Silk Thong.

30080
SILK THONG

With rhinestone circle trim at rear. Colors: Black, Hot Pink, Hot Lime, White, Aqua, Purple Garnet. Sizes: S/M, L/XL.



30075
ALSO AVAILABLE
IN PLUS SIZES

30080





20306
ALSO AVAILABLE
IN PLUS SIZES

20306
SOFT AND SEXY OUR
MULTI FIBER CHIFFON AND
TRI-TONE LACE UNDER
WIRED BABY DOLL

*Has flattering and supportive
pleated cups, tie front closure,
and adjustable straps. Comes
with a lace G-string. Colors:
Black, Periwinkle Blue, Pink.
Sizes: S-M-L. Also available
in Plus Sizes.*

20307
FLATTERING EVERY FIGURE,
OUR HIGH MULTI CHIFFON
CHEMISE

*Lavishly trimmed in a tri-tone
lace that scallops across the
front and down the adjustable
tie sides. Adjustable shoulder
straps and G-string are also
included. Colors: Black,
Periwinkle Blue, Pink. Sizes:
S-M-L-XL.*

exquisitely pretty



20307





ALSO AVAILABLE
IN PLUS SIZES
20123



20123
**PRETTY AND SEXY SHEER NET
ROBE/SHIRT** *Beautifully
trimmed with a sequin and pearl
embellished Venice trim, tie front.
Comes with G-String. Colors:
Purple Garnet, Black, Red,
White, Pink. Sizes: S/M,
M/L. Available in Plus Sizes.*

20122
**CHARMEUSE CHEMISE—
PURE AND INNOCENT WITH
A HINT OF SEX APPEAL**
*With embellished Venice trim
front, low back with adjustable
straps and has a sensuous net
kick pleat. Colors: Purple
Garnet, Black, Red, White,
Pink. Sizes: S-M-L. Available
in Plus Sizes: 1X-2X-3X-4X-
5X-6X.*



*subtle sex
appeal*

20122
ALSO AVAILABLE IN
PLUS SIZES





ALSO AVAILABLE
IN PLUS SIZES

20115

20123



romantic notions

20115 CHARMEUSE AND SHEER NET BABY DOLL

With sequin embellished Venice front, low back tied in a flirtatious bow, and adjustable straps. Comes with G-String. Colors: Black, White, Red, Purple Garnet, Pink. Sizes: S-M-L. Available in Plus Sizes. Shown with Sheer Robe/Shirt 20123.

20123 PRETTY AND SEXY SHEER NET ROBE/SHIRT

Beautifully trimmed with a sequin and pearl embellished Venice trim, tie front. Comes with G-String. Colors: Black, Red, White, Purple Garnet, Pink. Sizes: S/M, M/L. Available in Plus Sizes.

20116 CHARMEUSE AND SHEER NET LONG GOWN

Trimmed with a sequin embellished Venice appliqué, adjustable straps and a sheer three-tiered train cascading down the back. Colors: Purple Garnet, Black, White, Red, Pink. Sizes: S-M-L. Available in Plus Sizes. Shown with Sheer Robe/Shirt No. 20123.



20116
ALSO AVAILABLE
IN PLUS SIZES





25040



25041



25040

ALL ABOUT THE BLING CHEMISE *Lace and stretch satin and stretch mesh chemise sports a sexy strappy, elastic back with a dazzling rhinestone embellishment. Chemise also has adjustable straps and removable adjustable garters. Comes with G-string. Colors: Black, Red. Sizes: S-M-L-XL. Shown with No. 6618 Stockings and No. 219 Gloves.*

25041

OUTRAGEOUSLY SEXY BLING TEDDY *With rhinestone studded Venice trim gracing the bust line, Satin at panty and hook back closure and adjustable straps. Colors: Black, Red. Sizes: S-M-L-XL. Shown with No. 219 Gloves.*



25037

25038

25039

25037

BLING SHELF BRA With rhinestone studded Venice across the bust line and rhinestone adornments on the adjustable shoulder straps. Colors: Black, Red. Sizes: 32-34-36-38.

25038

BLING GARTER BELT With rhinestone studded Venice across the waist. Adjustable back and brilliant rhinestone adjustable garters. Colors: Black, Red. Sizes: S/M, L/XL. Shown with No. 6618 Stockings and No. 219 Gloves.

25039

BLING OPEN FRONT PANTY With satin, rhinestone buckle, Venice trim and open front styling. Colors: Black, Red. Sizes: S/M, L/XL. Shown with No. 90055 Stockings and No. 219 Gloves.

just the bling



starkly striking

25034

25034
CROSS HATCHED NET, STRETCH LACE AND MULTI RIBBON THONG TEDDY

*With hidden under wired cups, low back with hook back closure and lacing after lacing of sexy satin ribbon.
Colors: Black, White. Sizes: S-M-L-XL.*

25033
CROSS HATCHED NET, STRETCH LACE AND MULTI RIBBON GARTERED CHEMISE

With hidden under wired cups, lacing after lacing of sexy satin ribbon, low back with hook back closure, adjustable straps, adjustable garters. Comes with G-string. Colors: Black, White. Sizes: S-M-L-XL. Shown with No. 6618 Stockings.



25033





25004



25004

**STRETCH LACE AND
FANCY NET "PEEK-A-BOO"
CHEMISE**

*With rhinestones
embellishing the opening of the
open cup while a wispy net
ties neatly around the bust line.
Untie the net and expose the
hidden treasures. Chemise has
under wired cups, adjustable
straps with strappy back
closure, removable, adjustable
garters and a sexy lace up rear.
Comes with G-String. Colors:
Black, Passion Pink. Sizes: S-
M-L-XL. Shown with No.
5008 Stockings.*

3048

**STRETCH MESH AND
STRETCH LACE
GARTERED CHEMISE**

*With strappy, slightly padded,
under wired cups and a lace
trimmed low sexy back. Our
chemise also comes with
removable garters and a G-
string. Colors: Black, White.
Sizes: S-M-L. Shown with
No. 5001 Stockings and No.
219 Gloves.*

*definite
drama*

3048



20155





8465
ALSO AVAILABLE
IN PLUS SIZES



8463



20155
**FLORAL APPLIQUE AND
STRETCH MESH STRAPPY
BUSTIER**

*With adjustable straps,
elasticized garters. Comes
with G-string. Colors:
Black, Berry, White. Sizes:
S-M-L. Shown with No.
6618 Stockings.*

8465
CLASSIC KIMONO BACK BY POPULAR DEMAND

The demand for our charmeuse Kimono with it's two side pockets, inner tie and self belt was so great that we brought it back in 7 colors. Colors: Buttercup Yellow, Cherry Red, Passion Pink, Baby Pink, White, Black, Alluring Blue. One Size. Also available in Plus Sizes.

8463
CLASSIC CHARMEUSE CHEMISE BACK BY POPULAR DEMAND

The demand for our simply elegant Chemise with adjustable straps, was so great that we brought it back in 7 colors. Colors: Alluring Blue, Baby Pink, Black, Buttercup Yellow, Cherry Red, Passion Pink, White. Sizes: S-M-L-XL. Shown with No. 8465 Robe.

worth the hype



20300
ALSO AVAILABLE
IN PLUS SIZES



20300
CHARMEUSE AND LACE
LONG GOWN

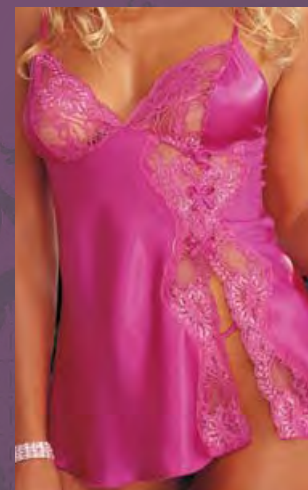
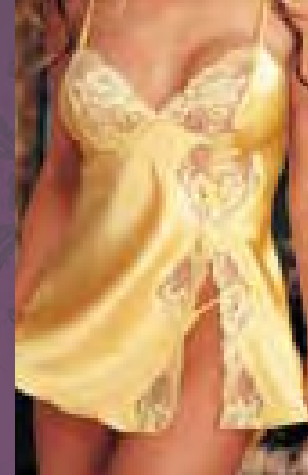
With lace trimmed cups, low back with criss cross tie shoulder straps that tie down to a flowing train of scalloped lace and charmeuse. Colors: Purple Garnet, Buttercup Yellow, Cherry Red, Electric Blue, Passion Pink. Sizes: S-M-L. Also available in Plus Sizes.

20016
CHARMEUSE AND
DYED-TO-MATCH LACE
BABY DOLL

With sexy side, cut-away front, adjustable straps and comes with tie side thong Panty. Colors: Purple Garnet, Buttercup Yellow, Cherry Red, Dark Electric Blue, Passion Pink. Sizes: S-M-L. Available in Plus Sizes.

*the new
neons*

20016
ALSO AVAILABLE
IN PLUS SIZES





20015
ALSO AVAILABLE
IN PLUS SIZES

ultra brights



20015
**OUR BEST SELLING CHEMISE,
UPDATED**
**CHARMEUSE AND
DYED-TO-MATCH LACE
CHEMISE**

In a beautiful, elegant look of Charmeuse and scalloped lace, running down each side accompanied by a sexy lace-up (or down!) side closure, and adjustable straps. Colors: Purple Garnet, Buttercup Yellow, Cherry Red, Dark Electric Blue, Passion Pink. Sizes: S-M-L. Available in Plus Sizes.

20255
**CHARMUESE AND LACE
BABY DOLL**

With under-wired cups, adjustable straps, tie front. Comes with G-string. Colors: Purple Garnet, Buttercup Yellow, Cherry Red, Electric Blue, Passion Pink. Sizes: S-M-L. Also available in Plus Sizes.



20255
**ALSO AVAILABLE
IN PLUS SIZES**





53012



53010



*puttin' on
the glitz*

53012

**SPARKLE, SHINE AND
SHAKE IT—OUR LINED
SEQUIN AND BEADED
FRINGE 2 PIECE SET**

*Set includes triangle top
with halter tie neck and tie
back. Thong panty has hook
side closures. Colors: Black,
White. One Size.*

53010

**DANCE WITH YOUR
STAR CHEMISE**

*With sequin peek-a-boo
cups. Chemise also features
stretch lace and dotted
stretch mesh body with sexy
beaded fringe hemline.
Comes with Criss-cross
elasticized Straps and
G-string. Colors: Black,
White. One Size.*

53011

**GLITZY TEDDY IN
STRETCH MESH**

*With sequins and beads
embellishing, the cups and
bottom along with sexy
beaded fringe that extends
all across the rear, Halter
neck closure. Colors: Black,
White. One Size.*



20276



20276

STUNNING AND SEXY— OUR INTRICATE PATTERNED VENICE AND STRETCH MESH CHEMISE With under wired shelf cups adorned with rhinestones. Comes with adjustable straps, super sexy lace-up back, and a G-string. Colors: Black, White. Sizes: S-M-L. Shown with No. 219 Gloves.

20277

RHINESTONE STUDDED VENICE, UNDER WIRED, SHELF BRA With elasticized, adjustable shoulder straps and hook back closure. Sizes: 32-34-36-38.

102

20277

20279

20280



20279

VENICE THONG PANTY With elasticized, adjustable sides and a sexy rhinestone “T” back. One Size.

20280

VENICE GARTERBELT With a super-sexy lace-up back, lavishly adorned with rhinestone garter grips. Sizes: S/M, L/XL.

Above styles are available in Colors: Black, White. Shown with No. 219 Gloves and No. 6561 Stockings.



1137

477



1137
BEADED FRINGE BABY DOLL

With solid spandex cups, sheer net skirt with a sexy open back with halter neck tie and tie back. Comes with Spandex G-string. Color: Black. Sizes: S-M-L-XL.

477
ITALIAN MICRO-FIBER SPANDEX "HOT" SHORTS

Shiny and soft. Colors: Black, Copper, Turquoise, White, Purple, Red. Sizes: S-M-L-XL. Comes boxed.



1198

1198
BEADED FRINGE 2 PIECE SET

Set includes Spandex Tri-Top with beaded fringe across bust with halter tie neck and back. Thong panty has beaded fringe across the front. Color: Black. Sizes: S-M-L-XL.

a lot of edge



2497
ALSO AVAILABLE
IN PLUS SIZES



*be a
wild child*

7083
ALSO AVAILABLE
IN PLUS SIZES



9024

2497
STRETCH LACE AND 15 DENIER "OPEN BUST" TEDDY *With convenient crotch opening. Colors: Black, Plum, Red. Sizes: S/M-M/L. Plus Sizes too, X2497: 1/2X, 3/4X, 5/6X.*

9024
SATIN AND LACE "OPEN BUST" TEDDIETTE 2PC SET *With crotch opening, lace-up back and comes with Stockings. Colors: Black, Red. Sizes: S-M-L. Shown with Gloves No. 232.*

7083
LYCRA STRAPPY 4 PC. SET *Set includes BUSTIER with halter neck closure, low back, and clip garters, G-STRING, GLOVES and STOCKINGS. Colors: Black, White. Sizes: S-M-L. Plus Sizes also, X7083: 1X-3X.*



*the
Ready-to-Wear
Collection*



Get Ready to Wow

Shirley's new Ready to Wear Collection goes from in the mood to out on the town without missing a beat. Dress up low-slung jeans with a ruffled sheer shirt that shows off a lacy bra. Up the elegance in a silk bustier and tuxedo pants or go Goth in a skull corset with skintight leggings. Shirley's easy ensembles are hard to resist, **so mix them, mingle them and make them yours.**



+



=



+



=



TABLE OF CONTENTS

STYLE	ITEM	PG
614	FLORAL TAPESTRY WAIST CINCHER	131
623	STRETCH SATIN AND BLACK LACE WAIST CINCHER	130, 131
660	STRETCH SPANDEX CHAIN WAIST CINCHER	129
2104	COTTON SPANDEX BODY SUIT	128, 129
2105	VERA SATEEN SKIRT WITH RUFFLE	111, 117, 132
2106	VERA SATEEN PLEATED SKIRT WITH BELT LOOPS	118, 132
2107	POLKA DOT COTTON/POLY SKIRT	114, 133
3091	NET AND RUFFLED BEADED LACE, LAYERED MINI SKIRT	107, 132
3202	KNIT SHIRRED OFF THE SHOULDER MINI DRESS	127
3203	STRETCH SATIN PENCIL SKIRT	107, 108, 132
4227	SPANDEX AND STRETCH LACE LONG PANTS	126, 131, 134
4250	SKINNY STRETCH PANTS WITH ZIPPERS	112, 126, 129, 134
4252	KNIT SHIRRED SKINNY PANTS	110, 115, 130, 134
9001	STUNNING FLORAL TAPESTRY STRAPLESS CORSET	121
9505	ZEBRA AND DOT BUSTIER	114
9506	STRETCH SATIN AND LACE CORSET	107
20317	MULTI FIBER CHIFFON LONG SLEEVE BLOUSE	110, 126, 131
25073	FLORAL FLOCKED VELVET ON SATIN WAIST CINCHER	126
25082	STRETCH BLEACH DENIM SKIRT	120, 133
25090	GLITTER DENIM MINI SKIRT	122
25090	GLITTER DENIM MINI SKIRT	133
25091	KNIT TOP	126
25096	STRETCH FLORAL SCROLL JACQUARD SKIRT	123, 133
25101	STRIPE TAPESTRY WAIST CINCHER	127

STYLE	ITEM	PG
25101	STRIPE TAPESTRY WAIST CINCHER	129
25102	CHIFFON RUFFLED BLOUSE	130
25907	SATIN CORSET WITH BREAK AWAY ZIPPER FRONT	112
25917	HEAVY SATIN STRAPLESS CORSET AND G-STRING	110
25922	STRETCH SATIN CORSET	111
25923	STRETCH BLEACH DENIM CORSET	120
25924	SKULLDUGGERY CORSET	115
25925	JACQUARD CORSET	108
25926	STRIPE TAPESTRY HALTER STYLE VEST CORSET	117
25927	GLITTER DENIM HALTER STYLE VEST CORSET TOP	122
25928	STRETCH FLORAL SCROLL JACQUARD CORSET	123
27000	SATIN 3/4" FITTED PANT WITH SHIRRING	128, 129, 135
27001	SATIN LAYERED SKIRT	109, 132
27002	SATIN 3/4" FITTED PANT	118, 119, 129, 135
27003	SATIN & LACE HOT PANT WITH BELT	113, 135
29000	STRETCH SATIN CORSET	119
29020	VICTORIAN STRETCH JACQUARD CORSET	109
29038	STRETCH KNIT AND "EYELASH" LACE TRIM BUSTIER	118
29047	"PEBBLE" CHARMEUSE STRAPLESS CORSET	125
29063	ANGEL & LOVE STRETCH JACQUARD BUSTIER	116
29064	STRETCH JACQUARD AND STRETCH LACE CORSET	113
30023	SILK CHIFFON SKIRT	125, 131, 132
59013	ANIMAL PRINT STRETCH SATIN AND EYELASH LACE BUSTIER	124

*go-everywhere
corset*

9506
HEAVY SATIN AND LACE
CORSETO

with slimming boning, adorable lace trim, separating hook front metal busk, lace up ribbon back, adjustable removable garters. Comes with G-String. Colors: Pink, Black. Sizes: 32-34-36-38. Shown with No. 219 Gloves, No. 3091 Net Skirt, No. 3203 Satin Skirt.

3203
STRETCH SATIN PENCIL SKIRT
With zipper on side and self ruffles on sides. Color: Black. Sizes: S-M-L-XL

3091
NET AND RUFFLED BEADED LACE, LAYERED MINI SKIRT
Colors: Black. Sizes: S/M, L/XL. Shown with No. 275 Booty Shorts and No. 5006 Stockings.



9506
3091



9506
3203



25925
3203

classic tailoring

25925
CHATEAU MEDALLION
STRAPLESS TAPESTRY CORSET

with Charmeuse side panels, slimming boning, and zip-up closure on back. Comes with removable adjustable garters and a G-string. Colors: Emerald, Lavender. Sizes: 32-34-36-38.

3203
STRETCH SATIN PENCIL SKIRT

With zipper on side and self ruffles on sides. Color: Black. Sizes: S-M-L-XL

29020
VICTORIAN STRETCH
JACQUARD CORSET

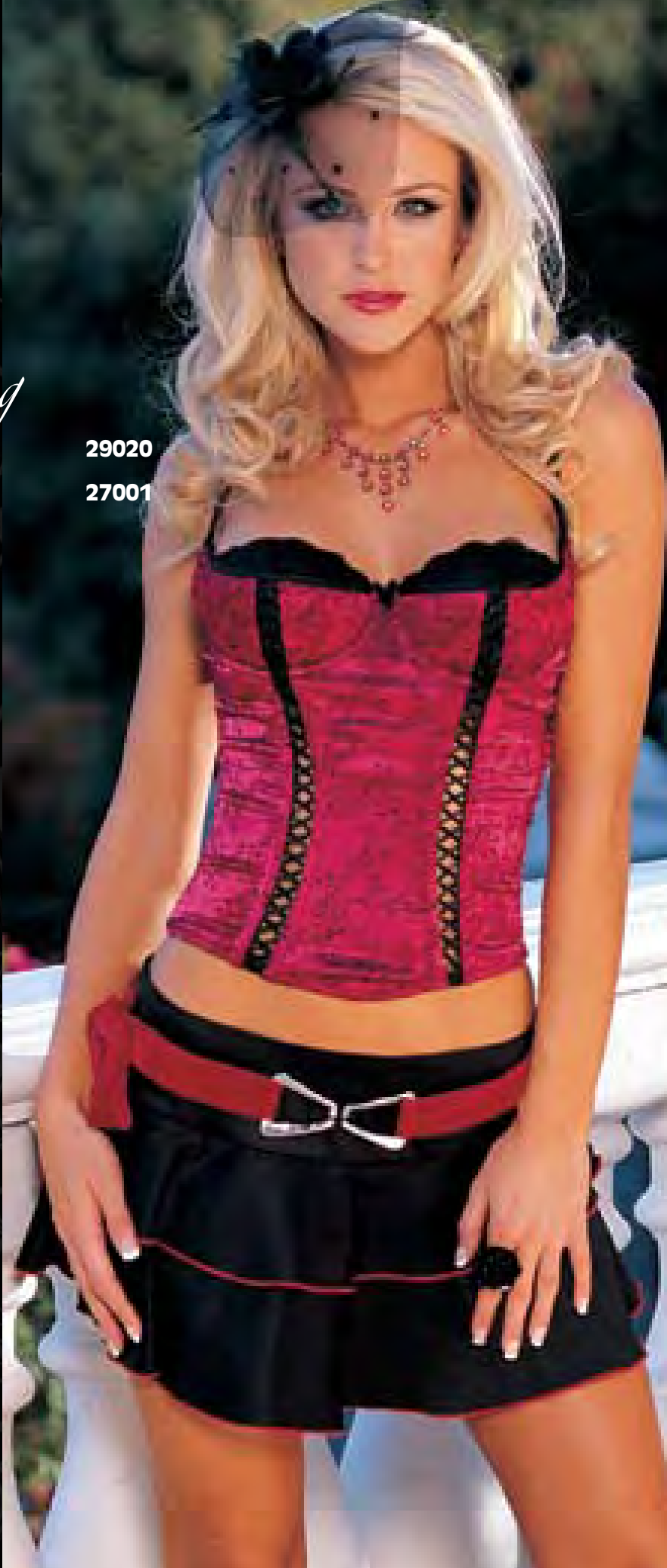
With separate, slightly padded under-wired Bra trimmed with stretch lace, waist slimming hook & eye back, mock ribbon lace-up trim and has adjustable straps, and removable garters. Comes with G-string. Colors: Black/Black, Red/Black, Denim/Black. Sizes: 32-34-36-38. Shown with No. 27001 Skirt and No. 219 Gloves.

27001
SATIN LAYERED SKIRT

Comes with belt and zip closure back. Color: Black/Red. Sizes: 2-4-6-8-10-12.

29020

27001





25917

20317

4252

25917

HEAVY SATIN STRAPLESS CORSET AND G-STRING

With exposed spiral boning, corded lace-up front and back with metal hook busk and elasticized strappy front. Comes with removable, adjustable garters and a G-string. Color: Black. Sizes: 32-34-36-38. Shown with No. 5001 Stockings and No. 219 Gloves.

20317

MULTI FIBER CHIFFON LONG SLEEVE BLOUSE

With an elasticized neck line and cuffs and a hemline that falls below the waist. Colors: Black, Spearmint, Petunia Pink. Sizes: S-M-L.

4252

KNIT SHIRRED SKINNY PANTS

With shapely, sexy, shirring along the sides. Color: Black. Sizes: S-M-L-XL

25922

STRETCH SATIN CORSET

With sash style bow in front, separating hook front metal busk, lace up ribbon back, removable adjustable garters. Comes G-string. Colors: Red/Black, Emerald Green/Black. Sizes: 32-34-36-38. Shown with No. 219 Gloves, No. 5001 Stockings and No. 2105 Skirt.

2105

VERA SATEEN SKIRT WITH RUFFLE

With elasticized waist and mock button detailing. Color: Black. Sizes: S-M-L-XL



25922

2105

*a dash of
class*





25907

4250



hip for clubbing

25907
**SATIN CORSET WITH
BREAK AWAY ZIPPER
FRONT**

With slimming boning, lace up back with strong cording lacers and comes with removable, adjustable garters and G-string. Colors: Black, Passion Pink/Black, Red/Black. Sizes: 32-34-36-38. Wear it out with our No. 4250 Pants.

4250
**HEAVY SPANDEX SKINNY
STRETCH PANTS WITH
ZIPPERS**

With zippers at each side calf, elasticized waist. Color: Black. Sizes: S-M-L-XL

29064
**STRETCH JACQUARD AND
STRETCH LACE CORSET**

With built in slightly padded under wired cup bra, hook and eye back closure, stretch lace insets at sides for easy wear. Also comes with adjustable straps, removable garters and G-string. Colors: Black/Red, Red/Black. Sizes: 32-34-36-38. Shown with No. 219 Gloves and No. 5006 Stockings.

27003
**SATIN & LACE HOT PANT
WITH BELT**

With stretch lace hem, zipper front and braided belt. Color: Black/Red. Sizes: 2-4-6-8-10-12.

29064

27003





9505

2107



9505

**ZEBRA AND DOT
STRETCH POPLIN BUSTIER**

*With slightly padded under
wired cups, hook and eye front,
elastic Shirred back, and
removable adjustable garters.
Comes with G-string. Color:
Black/White. Sizes: 32-34-
36-38.*

2107

**POLKA DOT
STRETCH POPLIN SKIRT**

*Lined in zebra print. Color:
Black/White. Sizes: S-M-L-
XL.*

25924

SKULLDUGGERY CORSET

*with slimming boning, metal
zipper front, lace up ribbon
back, adjustable removable
garters. Comes with G-String.
Colors: Black/Ivory,
Ivory/Black. Sizes: 32-34-36-
38.*

4252

KNIT SHIRRED SKINNY PANTS

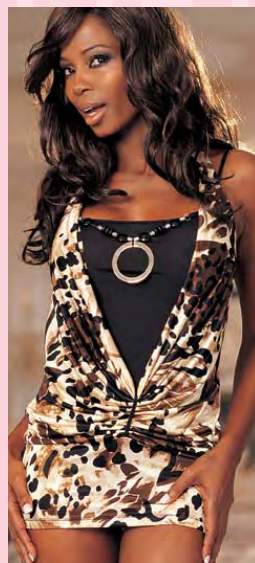
*With shapely, sexy, shirring
along the sides. Color: Black.
Sizes: S-M-L-XL.*

urban legends

25924

4252





the talk of the town

29063

**ANGEL & LOVE
STRETCH JACQUARD BUSTIER**

Adorned with sequin and pearl embellished lace on front, chopper bar lace side insets, pleated ruffle hem, slimming boning, and zipper closure on back. Comes with removable adjustable garters and matching embellished lace G-string. Colors: White, Black. Sizes: 32-34-36-38. (Pants not for sale.)

25093

KNIT CHEMISE *With gathered front, beaded necklace, and halter neck ties. Colors: Black, Hot Pink Print, Natural Print. Sizes: S-M-L-XL.*

25926

**CASABLANCA STRIPE TAPESTRY
HALTER STYLE VEST CORSET**

With slimming boning, lace up back, hook and eye front closure, and removable adjustable garters. Includes G-string. Colors: Ivory, Pink. Sizes: 32-34-36-38.

2105

VERA SATEEN SKIRT WITH RUFFLE

With elasticized waist and mock button detailing. Color: Black. Sizes: S-M-L-XL

25926

2105





29038
ALSO AVAILABLE
IN PLUS SIZES

27002



29038
ALSO AVAILABLE
IN PLUS SIZES

2106

29038

STRETCH KNIT AND "EYELASH" LACE TRIM BUSTIER

With a sexy key hole front, ribbon lace up front and hook & eye back closure. Adjustable straps, removable garters and matching G-string also included. Colors: Black/Hot Pink, Pink Leopard, Leopard. Sizes: 32-34-36-38. Also available in Plus Sizes.

2106

VERA SATEEN PLEATED SKIRT WITH BELT LOOPS

With zip back closure. Color: Black. Sizes: S-M-L-XL

29000

STRETCH SATIN CORSET

With contrasting, slimming boning, lace trim, hook & eye adjustable back, adjustable straps and removable garters. Colors: Black/Pink, Bright Rose/Black, Pink/White, Purple Garnet/Black. Sizes: 32-34-36-38. Also available in Plus Sizes.

27002

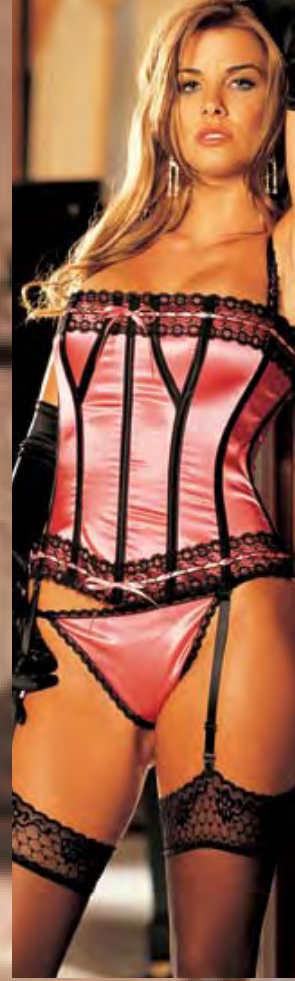
SATIN 3/4" FITTED PANT

With zipper front, side pockets and sexy shaped pockets on rear. Color: Black. Sizes: 2-4-6-8-10-12.

out and about

29000
ALSO AVAILABLE
IN PLUS SIZES

27002





*sharp dressed
denims*



3 LOOKS IN 1!
BY CHANGING
THE PROVIDED RIBBONS

25923

25082



ALSO AVAILABLE IN
PLUS SIZES
9001

25923

**STRETCH BLEACH DENIM
CORSET** *Trimmed with lace,
slimming boning, zip-up back,
and interchangeable ribbon
front. Comes with removable
adjustable garters, G-string,
and ribbon in red, black and
pink. Color: Blue Denim.
Sizes: 32-34-36-38.*

25082

**STRETCH BLEACH DENIM
SKIRT** *Trimmed with lace,
and interchangeable ribbon lace
up back. Color: Blue Denim.
Sizes: S-M-L-XL.*

9001

**STUNNING FLORAL
TAPESTRY STRAPLESS
CORSET** *With gorgeous
Venice trim, hook and eye
front, waist cinching lace-up
back, removable, adjustable
garters. Comes with Thong
Panty. Colors: Black,
Candlelight, Red/Black,
Violet/Black. Sizes: 32-34-
36-38. Plus Sizes also,
X9001: 38-40-42-44; and
XX9001: 46-48-50. Jeans
not for sale.*





25927

25090



25928

25096

*sensuously
soft*



25927

GLITTER DENIM HALTER STYLE VEST CORSET TOP *With lace up back, button up front closure, and adjustable halter strap. Color: Blue Denim. Sizes: S-M-L-XL.*

25090

GLITTER DENIM MINI SKIRT *With side zipper closure, mock pockets on back. Color: Blue Denim. Sizes: S-M-L-XL.*

25928

STRETCH FLORAL SCROLL JACQUARD CORSET *With a floating under wire, padded bra, slimming boning, side lace panels, hook and eye back, adjustable straps, and removable garters. Comes with G-string. Colors: Black/Black, Purple/Black, Red/Black, Bronze/Black. Sizes: 32-34-36-38.*

25096

STRETCH FLORAL SCROLL JACQUARD SKIRT *With elasticized waist and zipper side closure. Colors: Black, Purple, Red, Bronze. Sizes: S-M-L-XL.*



59013

on-the-go style

59013
**ANIMAL PRINT STRETCH SATIN
AND EYELASH LACE BUSTIER**

With build in underwired bra, stretch mesh back with hook and eye closure, with adjustable straps and removable adjustable garters. Colors: Pink, Natural, Turquoise. Sizes: 32-34-36-38. (Jeans not for sale)

29047
**"PEBBLE" CHARMEUSE STRAPLESS
CORSET**

With hook and eye side opening, waist slimming ribbon lace up back. Comes with matching G-string and removable garters. Sizes: 32-34-36-38. Colors: Black, Purple, Red. Also Available in Plus Sizes. Shown with No. 30023 Skirt.

30023
SILK CHIFFON SKIRT

With 3 tiered ruffles, fully lined and zip back. Colors: Black, Pink. Sizes: S-M-L.



29047
**ALSO AVAILABLE
IN PLUS SIZES**



30023





20317

25073

4227

20317

MULTI FIBER CHIFFON LONG SLEEVE BLOUSE With an elasticized neck line and cuffs and a hemline that falls below the waist. Colors: Black, Spearmint, Petunia Pink. Sizes: S-M-L.

25073

FLORAL FLOCKED VELVET ON SATIN WAIST CINCHER With metal busk front closure and lace up back. Colors: Emerald/Black, Red/Black. Sizes: S-M-L-XL.

4227

SPANDEX AND SRETCH LACE LONG PANTS With sexy lace panel at rear with lace-up adjustability. Color: Black. Sizes: S-M-L-XL.

126



25091

25091

KNIT TOP With slightly padded pads, beaded halter straps, shirred bust, and side lace panels. Colors: Black, Hot Pink Print, Natural Print. Sizes: S-M-L-XL. Comes with G-string.

4250

HEAVY SPANDEX SKINNY STRETCH PANTS WITH ZIPPERS With zippers at each side calf, elasticized waist. Color: Black. Sizes: S-M-L-XL



4250



3202



3202
KNIT SHIRRED OFF THE SHOULDER MINI DRESS
With ties at shoulders, elasticized cuffs and hem.. Color: Black. Sizes: S/M-L/XL.



3202

25101



25101
STRIPE TAPESTRY WAIST CINCHER *With slimming boning, lace up back, hook and eye front closure. Colors: Ivory, Pink. Sizes: S-M-L-XL*

elegant essentials



2104



27000



4250

city chic

2104
COTTON SPANDEX BODY SUIT
With cuffed sleeves and collar. Colors:
Black, Pink, White. Sizes: S-M-L-XL.

27000
SATIN 3/4" FITTED PANT WITH SHIRRING With shirring below knee. Zipper front with pockets at rear. Color: Black. Sizes: 2-4-6-8-10-12.

4250
HEAVY SPANDEX SKINNY STRETCH PANTS WITH ZIPPERS With zippers at each side calf, elasticized waist. Color: Black. Sizes: S-M-L-XL

25101
STRIPE TAPESTRY WAIST CINCHER With slimming boning, lace up back, hook and eye front closure. Colors: Ivory, Pink. Sizes: S-M-L-XL

660
STRETCH SPANDEX CHAIN WAIST CINCHER With zip up front closure. Color: Black. Sizes: S-M-L-XL.

27002
SATIN 3/4" FITTED PANT With zipper front, side and back pockets. Color: Black. Sizes: 2-4-6-8-10-12.



2104

25101

27000

660

4250

27002



25102

4252

623



25102

CHIFFON RUFFLED BLOUSE

With elasticized sleeves, contrast thread, and pearl buttons. Color: Black, Ivory. Sizes: S-M-L-XL.

4252

KNIT SHIRRED SKINNY PANTS

With shapely, sexy, shirring along the sides. Color: Black. Sizes: S-M-L-XL.

623

STRETCH SATIN AND BLACK LACE WAIST CINCHER

With hook and eye front, lace-up back, removable, adjustable garters. Colors: Black, Berry, Red. Sizes: S-M-L.





20317

623

30023

20317

MULTI FIBER CHIFFON BLOUSE *With elasticized neckline and cuffs. Colors: Black, Spearmint, Petunia Pink. Sizes: S-M-L.*

623

STRETCH SATIN AND BLACK LACE WAIST CINCHER *With hook and eye front, lace-up back, removable, adjustable garters. Colors: Black, Berry, Red. Sizes: S-M-L.*

30023

SILK CHIFFON SKIRT *With 3 tiered ruffles, fully lined and zip back. Colors: Black, Pink. Sizes: S-M-L.*

wardrobe staples



20317

614

4227

20317

MULTI FIBER CHIFFON LONG SLEEVE BLOUSE *With an elasticized neck line and cuffs and a hemline that falls below the waist. Colors: Black, Spearmint, Petunia Pink. Sizes: S-M-L.*

614

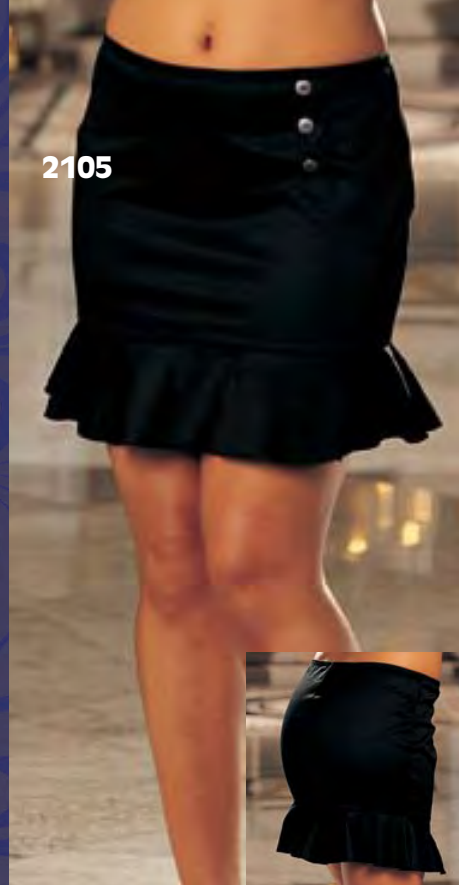
FLORAL TAPESTRY WAIST CINCHER *With Venice trim at top and bottom, also features a hook and eye front closure plus a ribbon lace-up, waist slimming, back. Colors: Ivory/Ivory, Lt. Blue/White, Red/Black, Violet/Black. Sizes: S-M-L.*

4227

SPANDEX AND STRETCH LACE LONG PANTS *With sexy lace panel at rear with lace-up adjustability. Color: Black. Sizes: S-M-L-XL.*



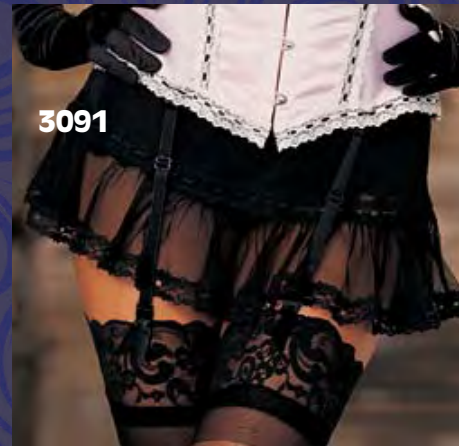
27001



2105



30023



3091



2106



3203

27001
SATIN LAYERED SKIRT

Comes with belt and zip closure back. Color: Black/Red. Sizes: 2-4-6-8-10-12.

2105
VERA SATEEN SKIRT WITH RUFFLE

With elasticized waist and mock button detailing. Color: Black. Sizes: S-M-L-XL

30023
SILK CHIFFON SKIRT *With 3 tiered ruffles, fully lined and zip back. Colors: Black, Pink. Sizes: S-M-L.*

3091
NET AND RUFFLED BEADED LACE, LAYERED MINI SKIRT
Colors: Black. Sizes: S/M, L/XL. Shown with No. 275 Booty Shorts and No. 5006 Stockings.

2106
VERA SATEEN PLEATED SKIRT WITH BELT LOOPS
With zip back closure. Color: Black. Sizes: S-M-L-XL

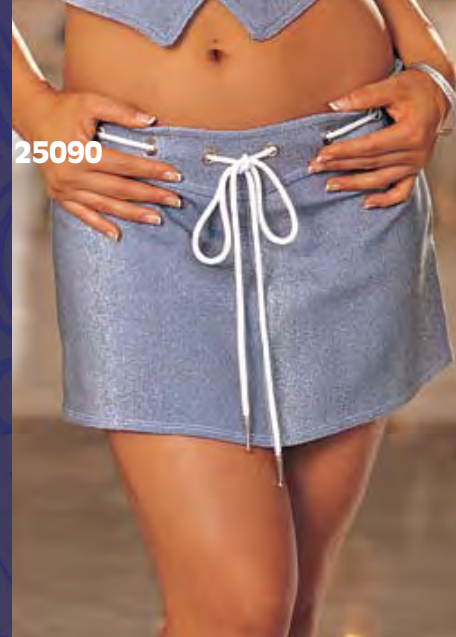
3203
STRETCH SATIN PENCIL SKIRT
With zipper closure and self ruffles on sides. Color: Black. Sizes: S-M-L-XL

*crossover
potential*

*smart and
sexy*



25082
3 LOOKS IN 1!
BY CHANGING
THE PROVIDED RIBBONS



25090

25082
STRETCH BLEACH DENIM SKIRT

Trimmed with lace, and interchangeable ribbon lace up back. Color: Blue Denim. Sizes: S-M-L-XL.

25090
GLITTER DENIM MINI SKIRT

With side zipper closure, mock pockets on back. Color: Blue Denim. Sizes: S-M-L-XL.



25096
STRETCH FLORAL SCROLL JACQUARD SKIRT

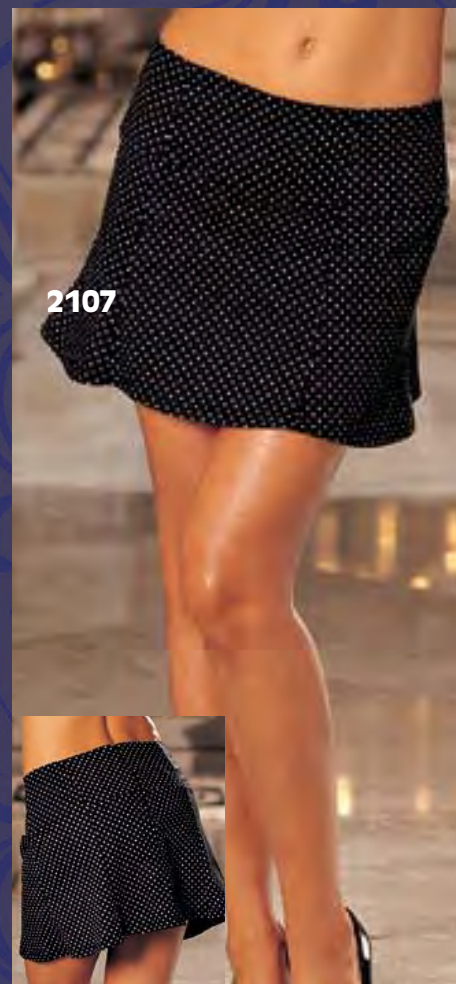
With elasticized waist and zipper side closure. Colors: Black, Purple, Red, Bronze. Sizes: S-M-L-XL.

2107
POLKA DOT STRETCH POPLIN SKIRT

With zip closure. Colors: Black/White. Sizes: S-M-L-XL.



25096



2107





4227



4227
SPANDEX AND STRETCH LACE LONG PANTS *With sexy lace panel at rear with lace-up adjustability. Color: Black. Sizes: S-M-L-XL.*



4250



4250
HEAVY SPANDEX SKINNY STRETCH PANTS WITH ZIPPERS *With zippers at each side calf, elasticized waist. Color: Black. Sizes: S-M-L-XL*



4252



4252
KNIT SHIRRED SKINNY PANTS *With shapely, sexy, shirring along the sides. Color: Black. Sizes: S-M-L-XL.*

27000



27002



27003



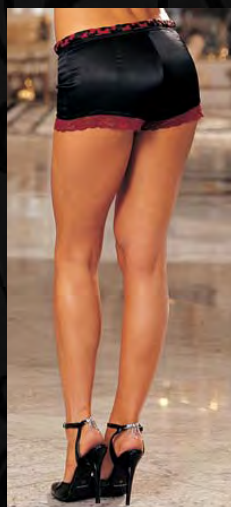
27000
SATIN 3/4" FITTED PANT WITH SHIRRING
With shirring below knee. Zipper front with pockets at rear. Color: Black. Sizes: 2-4-6-8-10-12.



27002
SATIN 3/4" FITTED PANT
With zipper front, side pockets and sexy shaped pockets on rear. Color: Black. Sizes: 2-4-6-8-10-12.



27003
SATIN & LACE HOT PANT WITH BELT
With stretch lace hem, zipper front and braided belt. Color: Black/Red. Sizes: 2-4-6-8-10-12.

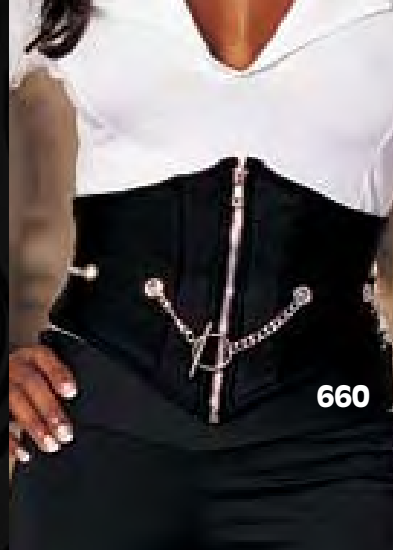




614

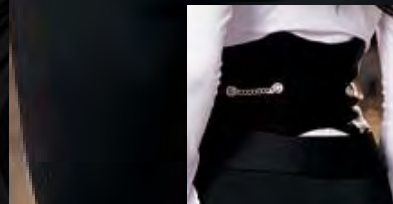


623



660

614
FLORAL TAPESTRY
WAIST CINCHER *With Venice trim at top and bottom, also features a hook and eye front closure plus a ribbon lace-up, waist slimming, back.*
Colors: Ivory/Ivory, Lt. Blue/White, Red/Black, Violet/Black. Sizes: S-M-L.



623
STRETCH SATIN AND
BLACK LACE WAIST CINCHER
With hook and eye front, lace-up back, removable, adjustable garters.
Colors: Black, Berry, Red. Sizes: S-M-L.

660
STRETCH CHAIN
WAIST CINCHER
With zip up front closure.
Color: Black. Sizes: S-M-L-XL.



ultra cool

25101
STRIPE TAPESTRY
WAIST CINCHER
With slimming boning, lace up back, hook and eye front closure.
Colors: Ivory, Pink. Sizes: S-M-L-XL.



25101



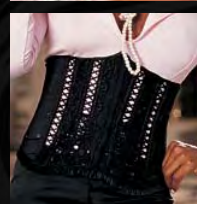
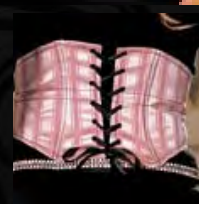
25073



20384

25073
FLORAL FLOCKED
VELVET ON SATIN
WAIST CINCHER *With metal busk front closure and lace up back.*
Colors: Emerald/Black, Red/Black. Sizes: S-M-L-XL.

20384
ANGEL & LOVE STRETCH
JACQUARD WAIST CINCHER
Adorned with sequin and pearl embellished lace on front, lattice trim insets, pleated ruffle hem, chopper bar lace sides and hook and eye closure back. Comes with removable adjustable garters.
Colors: White, Black. Sizes: S-M-L-XL.





*Something New, Blue
and Shirley, Too*

Shirley's Bridal Collection makes every wedding one to remember. Body-shaping bustiers and corsets accentuate every curve, long, flowing gowns shimmer with pearls, rhinestone-studded baby dolls sparkle like a bride's eyes. Our most sensuous silks and satins come together with our most lavish lace and jewel trims in a one-of-kind collection for a once-in-a-lifetime occasion.



20083



ALSO AVAILABLE
IN PLUS SIZES
9001



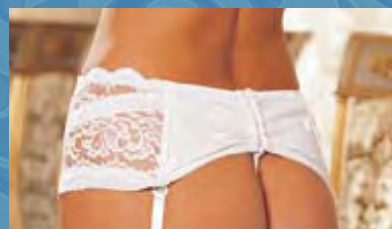
20384



20385



20391





20383



29063

20083 BEST SELLER—CHARMEUSE AND LACE BABY DOLL With beautiful sequin and pearl adornments gracing the cleavage. Comes with adjustable straps and G-string. Colors: Black, White. Sizes: S-M-L.

9001 STUNNING FLORAL TAPESTRY STRAPLESS CORSET With gorgeous Venice trim, hook and eye front, waist cinching lace-up back, removable, adjustable garters. Comes with Thong Panty. Colors: Black, Candlelight, Red/Black, Violet/Black. Sizes: 32-34-36-38. Shown with Stockings No. 5540, Gloves No. 239. Plus Sizes also, X9001: 38-40-42-44; and XX9001: 46-48-50.

20384 ANGEL & LOVE STRETCH JACQUARD WAIST CINCHER Adorned with sequin and pearl embellished lace on front, lattice trim insets, pleated ruffle hem, chopper bar lace sides, hook and eye closure back. Comes with removable adjustable garters. Colors: White, Black. Sizes: S-M-L-XL.

20385 ANGEL & LOVE STRETCH JACQUARD GARTER BELT Adorned with sequin and pearl embellished lace on front, lattice trim insets, pleated ruffle hem, slimming boning, and lace up back. Comes with removable adjustable garters. Colors: White, Black. Sizes: S/M-L/XL.

20391 ANGEL & LOVE STRETCH JACQUARD THONG Adorned with sequin and pearl embellished lace on front, and pleated ruffle waist. Colors: White, Black. Sizes: S-M-L-XL

20383 EMBELLISHED LACE AND NET BRIDAL BABY DOLL With embellished molded under wired padded push up cups, romantic flounces down skirt, stretch net back, and adjustable shoulder straps. Comes with G-string. Colors: White, Black. Sizes: S-M-L-XL.

29063 ANGEL & LOVE STRETCH JACQUARD BUSTIER Adorned with sequin and pearl embellished lace on front, chopper bar lace side insets, pleated ruffle hem, slimming boning, and zipper closure on back. Comes with removable adjustable garters and matching embellished lace G-string. Colors: White, Black. Sizes: 32-34-36-38.

hot for the honeymoon



20366E

20367E



20367E
ALSO AVAILABLE
IN PLUS SIZES

20366E

CHIFFON BABYDOLL *With embellished lace cups and cut out lace down sides, low back with criss-cross tie-up straps. Comes with G-String. Colors: Black, Cherry Red, White. Sizes: S-M-L-XL. Shown with No. 20367E Coat.*

20367E

CHIFFON COAT/SLEEP SHIRT *With embellished scalloped lace. Ties at sleeves and front. Comes with G-string. Colors: Black, Cherry Red, White. Sizes: S/M, L/XL. Also available in Plus Sizes.*



pearly whites

20365E
ALSO AVAILABLE
IN PLUS SIZES



20365E
CHARMEUSE CHEMISE *With exquisite overlapping embellished lace. Criss-cross adjustable straps with low back. Colors: Black, Cherry Red, White. Sizes: S-M-L-XL. Also available in Plus Sizes.*

20364E
CHARMEUSE AND CHIFFON LONG GOWN *With beautiful embellished lace. Criss-cross adjustable straps on low sexy back. Colors: Black, Cherry Red, White. Sizes: S-M-L-XL.*

20364E





20123
AVAILABLE IN
PLUS SIZES



20116
AVAILABLE IN
PLUS SIZES



29005


20123
PRETTY AND SEXY SHEER NET ROBE/SHIRT *Beautifully trimmed with a sequin and pearl embellished Venice trim, tie front. Comes with G-String. Colors: Purple Garnet, Black, Red, White, Pink. Sizes: S/M, M/L. Available in Plus Sizes.*

29005
SATIN STRAPLESS CORSET *Adorned with pearl-accented Venice trim cascading down the front, hook & eye side opening, slimming lace-up back, removable garters. Comes with G-String. Colors: Black, White. Sizes: 32-34-36-38. Shown with No. 6618 Stockings and No. 219 Gloves.*

20116
CHARMEUSE AND SHEER NET LONG GOWN *Trimmed with a sequin embellished Venice appliqué, adjustable straps and a sheer three-tiered train cascading down the back. Colors: Purple Garnet, Black, White, Red, Pink. Sizes: S-M-L. Available in Plus Sizes. Shown with Sheer Robe/Shirt No. 20123, No. 5500 Marabou Pumps.*



20115
AVAILABLE IN
PLUS SIZES



20122
AVAILABLE IN
PLUS SIZES



20115
CHARMEUSE AND SHEER NET BABY DOLL
With sequin embellished Venice front, low back tied in a flirtatious bow, and adjustable straps. Comes with G-String.
Colors: Purple Garnet, Black, White, Red, Pink. Sizes: S-M-L.

20122
CHARMEUSE CHEMISE—
PURE AND INNOCENT WITH A HINT OF SEX APPEAL
With embellished Venice trim front, low back with adjustable straps and has a sensuous net kick pleat.
Colors: Purple Garnet, Black, Red, White, Pink. Sizes: S-M-L. Available in Plus Sizes.

a night to remember



9393
AVAILABLE IN
PLUS SIZES



45019

9393
SATIN TAPESTRY FLOWERED JACQUARD LONG-LINE BUSTIER *With lightly padded underwire cups, hook & eye front, body controlling side, front, and back boning, plus a waist cinching lace-up back and adjustable garters. Comes with matching G-String. Colors: Black, Ivory, Red, Royal. Sizes: 32-34-36-38. Plus Sizes also, X9393: 38-40-42-44. Shown with No. 5027 Stockings.*

45019
LACE OVERLAY STRETCH SATIN BABY DOLL *With contrasting 3 boned, under wired cups, spandex mesh back with adjustable straps, full circle net skirt with ribbon edge trim. Comes with G-string. Colors: Black/Pink, White/Blue. Sizes: S-M-L-XL.*



197

197
LACE "OPEN FRONT" PANTY *With ribbon lace-up front. Colors: Black, White. One Size.*



622

622
SCALLOPED EMBROIDERY GARTERBELT *With adjustable back and garters. Colors: Black, Red, White. One Size. Shown with No. 10 Crotchless Panty, and No. 6618 Stockings.*



14

the new nuptials

14
BRIDAL GARTER IN GIFT BAG *12 Pack Leg Garter in drawstring bag. Colors: Assorted: 6 White, 6 White/Blue. One Size. Shown with No. 6618 Stockings.*

Fantasy Fulfilled

AVAILABLE IN
PLUS SIZES

Who said costumes are just for Halloween? Shirley's Costume Collection lets your fantasies come out to play any day you choose. Be beastly sexy, a little naughty or absolutely enchanting. Dressing up is wicked fun, so surprise your partner... or make it a twosome. Every Shirley costume is cut to fit and crafted to last, so you can host your own private party again and again.

7436

MAN OF THE MANSION 3 PC SET includes Velour "Smoking" JACKET with pockets, Charmeuse PANTS and Satin NECK SCARF. Color: Burgundy/Black. Sizes: M/L - L/XL.

7351

HIPPITY-HOP 5 PC SET includes Stretch DRESS with lace-up back, EARS, BOW TIE Collar, CUFFS and Poofy TAIL. Color: Black/Pink. Sizes: S/M-M/L. Sold Separately: Wig No. 848, Gloves No. 219, Fishnet Party Hose No. 96627. Also available in Plus Sizes.

7374



**7374
DOWNSTAIRS MAID**
3 Piece Costume includes Sparkle Stretch halter style DRESS, removable APRON and FEATHER DUSTER. Color: Black/White. Sizes: S/M - M/L. Sold Separately: Lace Petti-Coat No. 7385, Wig No. 846, Gloves No. 219, Fishnet Panty Hose No. 96627.

7545
869



**7545
CUTESY MAID** 3 PC SET includes Satin and Lace dress with hook and eye back closure, Lace Headband, and Apron. Colors: Black/White. Sizes: S/M, M/L. Shown with No. 869 Wings, No. 239 Gloves and No. 6618 Stockings.

**7226
TEACHERS PET**
School Girl 4 Piece Costume includes Spandex CROP TOP, Pleated Poly/Cotton Plaid SKIRT Velcro closure, brazilian cut ruffle PANTY, ruffle STOCKINGS. Color: Black/White. Sizes: S/M-M/L.

*schoolgirl
vixen*



7226
AVAILABLE
IN PLUS SIZES





7508



7539



100% Babe
XS size available

7645

**7645
SEXERGIZER BUNNY**

6 PIECE COSTUME includes Spandex CROP TOP with "Sexergizer Bunny" printed on the front, BOOTY SHORTS, EARS, Fake DRUM with "Keeps Going and Going" printed on the face, pretend BATTERIES with "Sexergizer XXX" printed on them, STICKS to beat the drum. Colors: Black/Hot Pink. Sizes: XS, S/M, M/L. Shown with No. 90055 Fishnet Stockings, No. 276 Glovettes. 100% BABE—Available in XS.

**7508
BAD BUNNY** 3 PC SET includes Stretch Velvet and Marabou Feather strapless DRESS with ribbon lace up back and comes with EARS and neck BOW. Color: Black, Sizes: S/M, M/L. Shown with No. 219 Gloves.

**7539
SULTRY HAREM GIRL** 4 PC SET includes Spandex, Sequin and Sheer Nylon Harem PANTS trimmed with coins, Tri TOP, VEIL and Spandex BOY SHORTS. Colors: Black/Gold. Sizes: S/M, M/L.





7541



7488



7489



7541

SKULLS AND ROSES 2 PC SET includes Spandex TOP with adjustable lace up back and cotton blend printed SKIRT with scary skulls and roses. Colors: Black/Red. Sizes: S/M, M/L. Shown with No. 90013 Stockings.

7488

SCOTTISH LASSIE 3 PC SET includes Spandex and lace Crop TOP, Woven Plaid SKIRT and HAT. Colors: White/Red. Sizes: S/M, M/L. Shown with No. 90047 Knee Hi's.

7489

ASIAN SCHOOL GIRL 2 PC SET includes Spandex Crop TOP and Asian Brocade SKIRT. Colors: White/Magenta. Sizes: S/M, M/L.

7446

IT'S MS. POLICE TO YOU

5 PC SET includes Stretch Twill TOP with POLICE patch, Mini SKIRT with Belt, HAT, CUFFS and BATON. (Sunglasses not included.) Color: Black. Sizes: S/M, M/L. Also available in PLUS SIZES.

7300

INMATE MOST WANTED

2 PC SET includes Spandex JUMPSUIT with zip-up front with print "S.E.X County 69-69-69" and back print "Property Of Penile System". Comes with Rubber SHACKLES. Color: Orange. Sizes: S/M-M/L. Shown with No. 848 Wig and No. 96627 Fishnet Party Hose.

7320

BOOTY CAMP 4 PC SET includes Stretch JUMPSUIT with zip front, HAT, "mock" DOG TAG and BINOCULARS. Color: Army. Sizes: S/M-M/L. Shown with No. 840 Wig and No. 96627 Fishnet Party Hose.



7320



7300

totally arresting



7446
AVAILABLE
IN PLUS SIZES





7385
AVAILABLE
IN PLUS SIZES



281

100% Babe
XS sizes
available



7544



7459
AVAILABLE
IN PLUS SIZES



7385
PETTICOAT

Shirred flounce net tulle and ruffles and ruffles of lace, elasticized waist. Colors: Black, White. Sizes: S/M, M/L. Also available in PLUS SIZES.

281
ALL OVER SEQUIN
BOOTY SHORTS

Hand sewn sequin bangles entirely cover a soft mesh under lining with elasticized waist. Colors: Black, Gold, Hot Pink, Red. Sizes: XS, S/M, M/L.

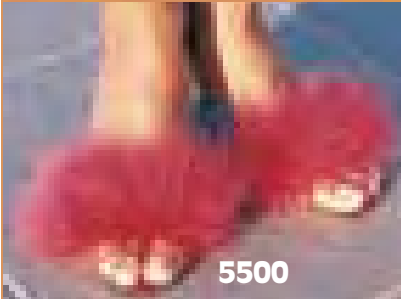
7544
FABSEX

Stretch Twill DRESS with button closure front with printing on the front that reads, "FabSex" and the back printing that reads, "I can handle your package!" Color: White. Sizes: S/M, M/L. Shown with No. 6618 Stockings.

7459
NIGHT NURSE

3 PC SET includes Cotton Blend CORSET TOP with hook and eye back closure and slimming boning down the front, SKIRT and HAT. Color: White/Red. Sizes: S/M, M/L. Shown with No. 90050 Panty Hose. Also available in Plus Sizes.

FabSex
Express
I can handle your package.



5500

*sleek and
slinky*

5500
**SATIN AND MARABOU
HIGH HEELED PUMPS** *Satin covered
with marabou. Man-made sole. Colors:
Black, Red, White. Full Sizes Only:
5,6,7,8,9,10,11. (Medium width.)*

5543
**BEJWELED FEATHER AND SATIN
HIGH HEELED PUMPS** *With sparkling
rhinestone adornment on top of lavish
feathers. Colors: Black, Red. Full Sizes:
5-6-7-8-9-10-11 (medium width).*



5543

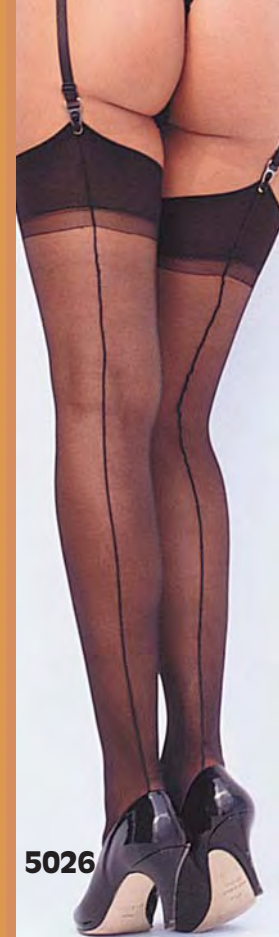


5001

5001
FISHNET WITH DOT LACE TOP STOCKINGS *Colors:
Black, Red, White. One Size Fits Most. Shown with
No. 20146 Garterbelt.*

5026
SHEER STRETCH NYLON STOCKINGS *With back
seams. Colors: Black, Jade, Nude, Pink, Pearl,
Plum, Red, Royal, White. One Size.*

5027
SHEER NYLON STRETCH STOCKINGS *Colors:
Black, Jade, Nude, Pink, Pearl, Plum, Red, Royal,
White, Mauve, Turquoise. One Size.*



5026



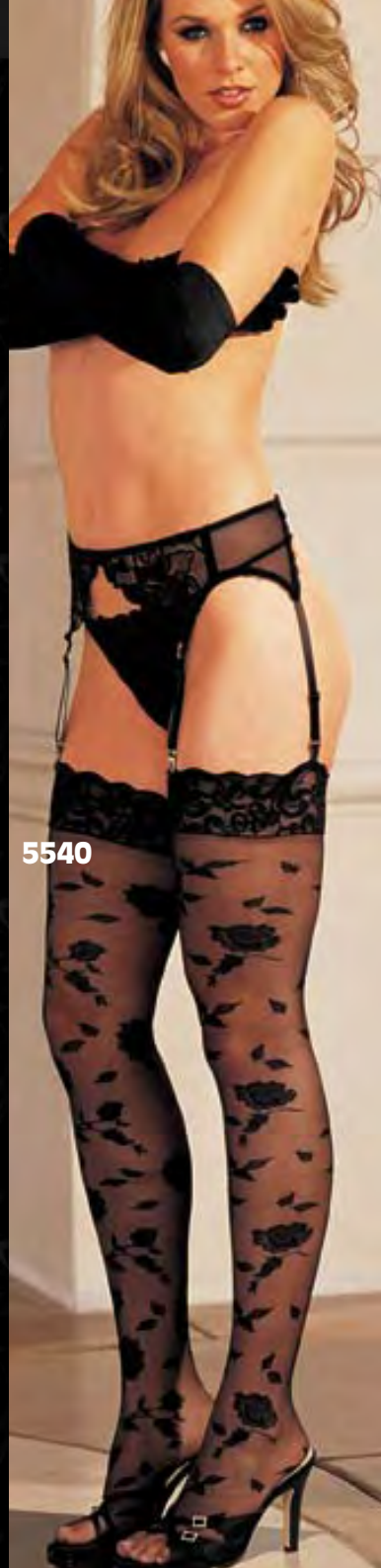
5027



5538

**5538
SHEER STRETCH KNIT
STOCKINGS**

With diagonal stripe and stretch lace top. Colors: Black, White. One Size. Shown with Garterbelt No. 51026.



5540

**5540
SHEER STRETCH KNIT
STOCKINGS**

With a woven all over floral design with stretch lace top. Colors: Black, White. One Size.



5008

**5008
SHEER STRETCH NYLON
POLKA DOT STOCKINGS**

With Stretch Lace gripper top. Colors: Black, Red, White. One Size.

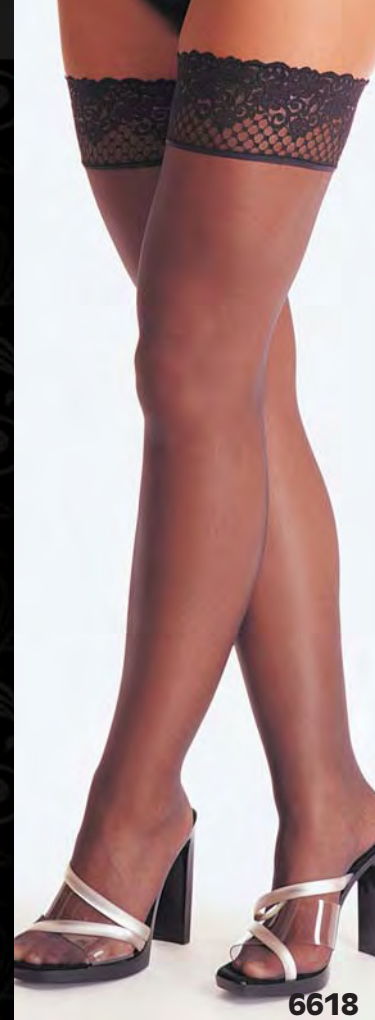
**5540
SHEER STRETCH KNIT
STOCKINGS**

With a woven all over floral design with stretch lace top. Colors: Black, White. One Size.

give it the glam



CUBAN HEEL
5006



6618



6629

5006
NEW STOCKING IN A FINE STRETCH KNIT AND HAS AN EXCITING "CUBAN HEEL" Plus a stretch lace top.
Colors: Black, White. One Size.

6618
SILKY SHEER SILICONE GRIPPER STAY-UP LACE TOP STOCKINGS
Colors: Black, Berry, Red, White. One Size.

6629
STRETCH LACE STAY-UP STOCKINGS
With silicone gripper elastic. Colors: Black, Red, White. Sizes: Small, Medium, Tall.

5541
STRETCH FISHNET AND SHEER STRETCH KNIT STOCKINGS
Colors: Black, White. One Size.



5541

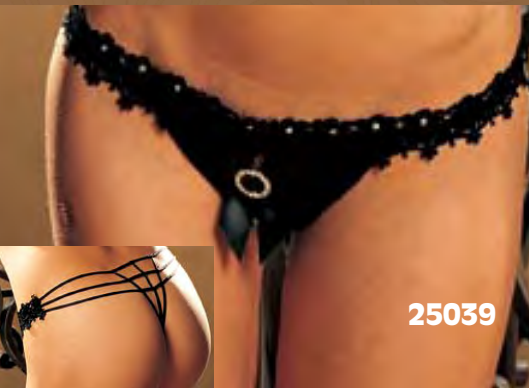


20279

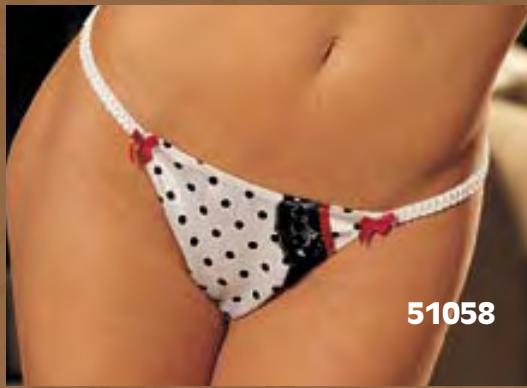


30080

20279
VENICE THONG PANTY With elasticized, adjustable sides and a sexy rhinestone "T" back. Colors: Black, White. One Size.



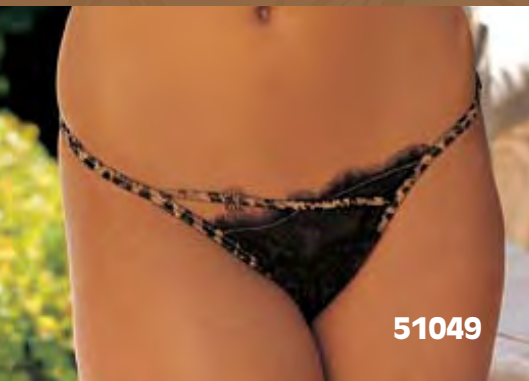
25039



51058

30080
SILK THONG With rhinestone circle trim at rear. Colors: Aqua, Purple Garnet, Black, Hot Lime, Hot Pink, White. Sizes: S/M, L/XL.

25039
BLING OPEN FRONT PANTY With satin, rhinestone buckle, Venice trim and open front styling. Colors: Black, Red. Sizes: S/M, L/XL.



51049



10

51058
POLKA DOT STRETCH CHARMEUSE THONG With lace and ribbon trim. Colors: Black/Pink, White/Black. Sizes: S-M-L-XL.

51049
ANIMAL PRINT STRETCH SATIN AND EYELASH LACE THONG With rhinestone buckle. Colors: Pink, Natural, Turquoise. Sizes: S-M-L-XL.



20145



20152

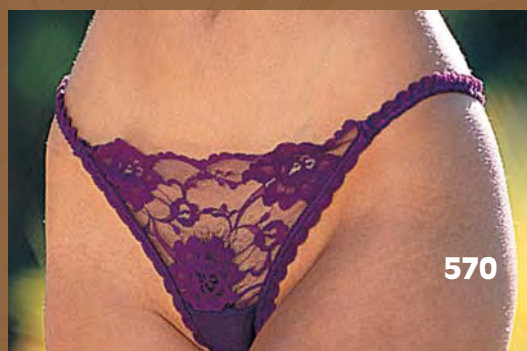
10
SCALLOPED EMBROIDERY CROTCHLESS THONG PANTY Colors: Black, Red, White. One Size. Plus Sizes also, X10: 1/2X-3/4X.

20145
STRETCH LACE STRAPPY THONG Colors: Black, Pink, Purple Garnet, White. One Size.

20152
NET AND EMBROIDERY THONG PANTY With criss-cross front. Colors: Black, White. Sizes: S-M-L.



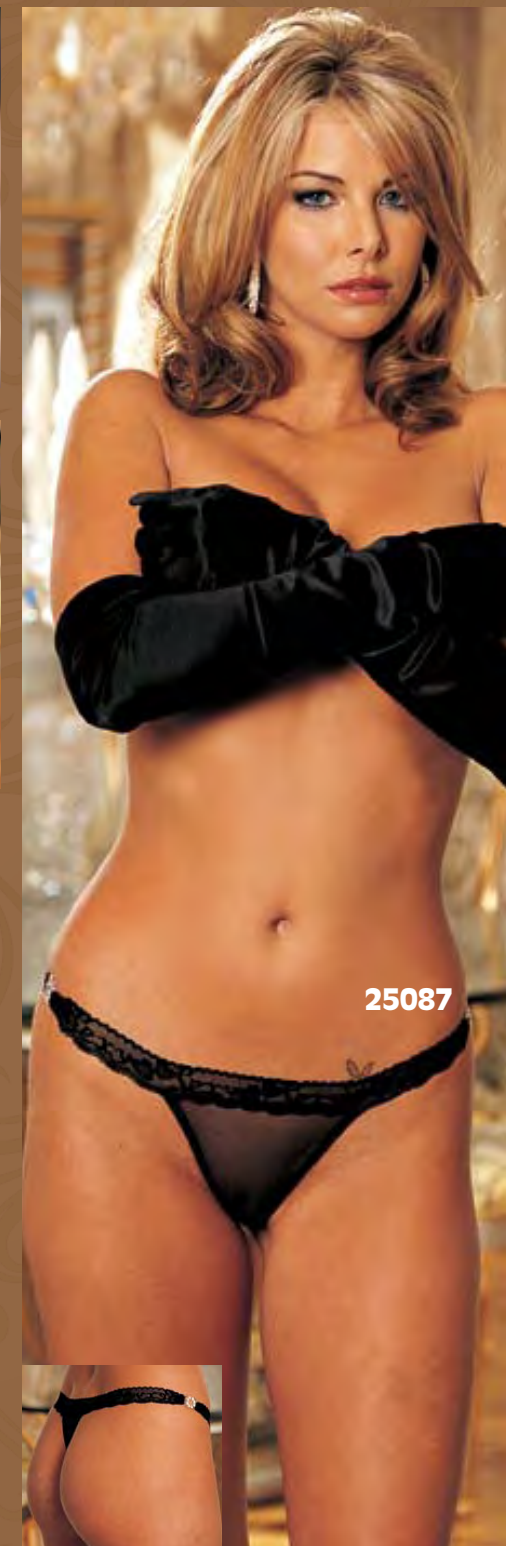
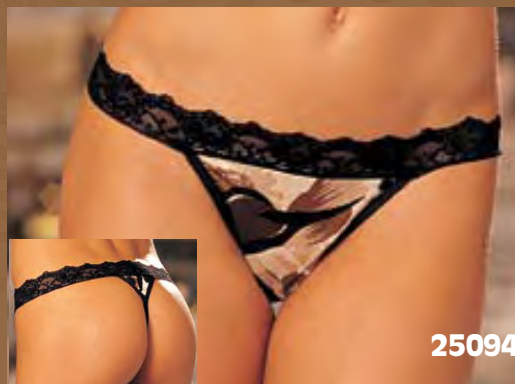
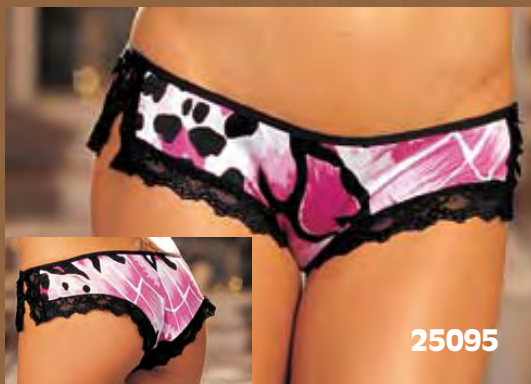
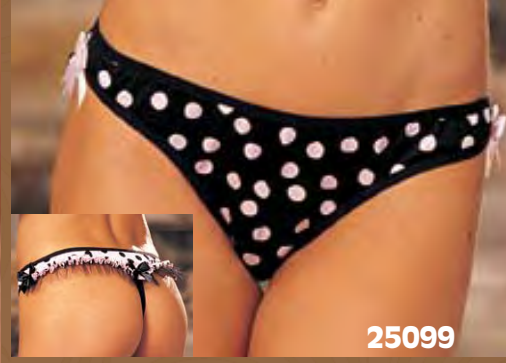
275



570

275
SPANDEX "BOOTY" SHORTS Colors: Black, Lt. Blue, Pink, Red, White. Sizes: P, S, M, L.

570
LACE BIKINI SPANDEX BACK Colors: Black, Plum, Red, White. Sizes: S-M-L.



122
STRETCH LACE "V" SHAPED THONG PANTY
12 PACK Colors: Assorted (Black, Coral, White.) Sizes: Assorted (S/M-M/L.)

197
LACE "OPEN FRONT" PANTY With ribbon lace-up front. Colors: Black, White. One Size.

25099
POLKA DOT KNIT OPEN FRONT PANTY
With ruffle rear trim. Colors: Black/Pink, Pink/Black. One Size.

25095
KNIT BOY SHORT Colors: Black, Hot Pink Print, Natural Print. Sizes: S-M-L-XL.

25094
KNIT THONG With stretch lace waistband. Colors: Black, Hot Pink Print, Natural Print. Sizes: S-M-L-XL.

20391
ANGEL & LOVE STRETCH JACQUARD THONG Adorned with sequin and pearl embellished lace on front, & pleated ruffle waist. Colors: White, Black. Sizes: S-M-L-XL

25089
STRETCH MESH AND "SEXY" LACE BOY SHORT Trimmmed with "SEXY" lace across top waistband and hem. Color: Black. Sizes: S-M-L-XL.

25087
STRETCH MESH AND "SEXY" LACE THONG Trimmmed with "SEXY" lace across top waistband. Color: Black. Sizes: S/M, L/XL.

sultry and sophisticated



611



622



671

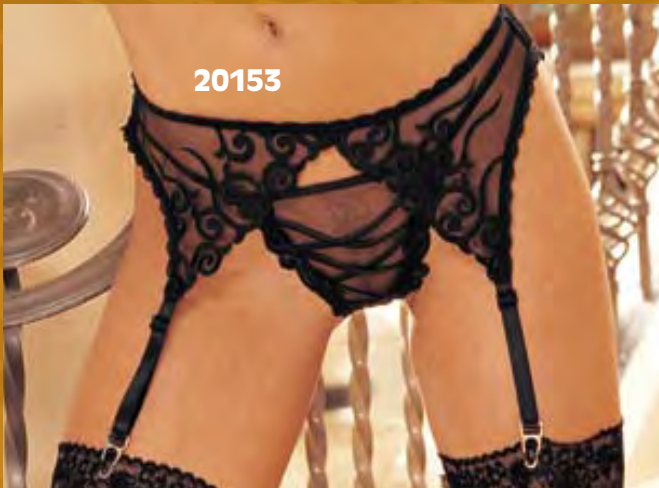
611
LACE GARTERBELT With adjustable back, garters. Shown with No. 570 Bikini and No. 5027 Stockings. Colors: Black, Plum, Red, White. One Size. Also available in Plus Sizes.

622
SCALLOPED EMBROIDERY GARTERBELT With adjustable back and garters. Colors: Black, Red, White. One Size. Plus Sizes also, X622: 1/2X-3/4X. Shown with No. 10 Crotchless Panty, No. 6618 Stockings.

671
CHOPPER BAR LACE GARTERBELT Colors: Black, Red, White. One Size. Plus Sizes also, X671: 1/2X-3/4X.



20280



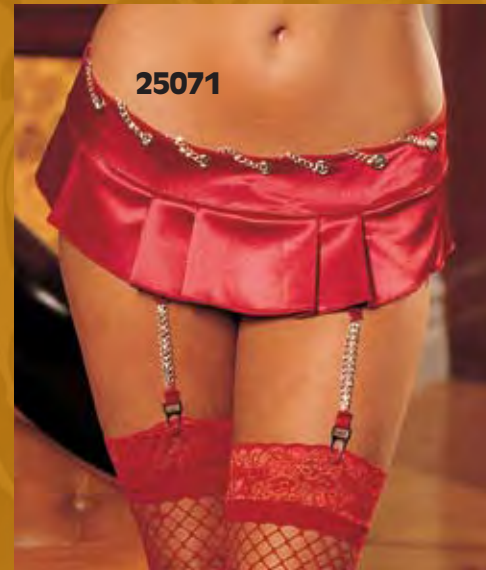
20153

for the most discerning tastes

20280
VENICE GARTERBELT With a super-sexy lace-up back, lavishly adorned with rhinestone garter grips. Colors: Black, White. Sizes: S/M, L/XL. Shown with No. 219 Gloves and No. 6618 stockings.

20153
STRETCH JACQUARD AND EMBROIDERY GARTERBELT With adjustable garters. Colors: Black, White. One Size. Shown with No. 20152 Thong, Gloves No. 219, and Stockings No. 6618.

25071
SATIN PLEATED MINI SKIRT With chain accents along the waistband, hook and eye closure and removable chain garters. Colors: Black, Red. Sizes: S-M-L-XL. Shown with No. 5001 Stockings.



25071





20146



25088

20146

STRETCH LACE GARTERBELT adjustable garters and hook back closure. Colors: Black, Pink, Purple Garnet, White. One Size. Shown with No. 20145 Thong, No. 5027 Stockings.

45018

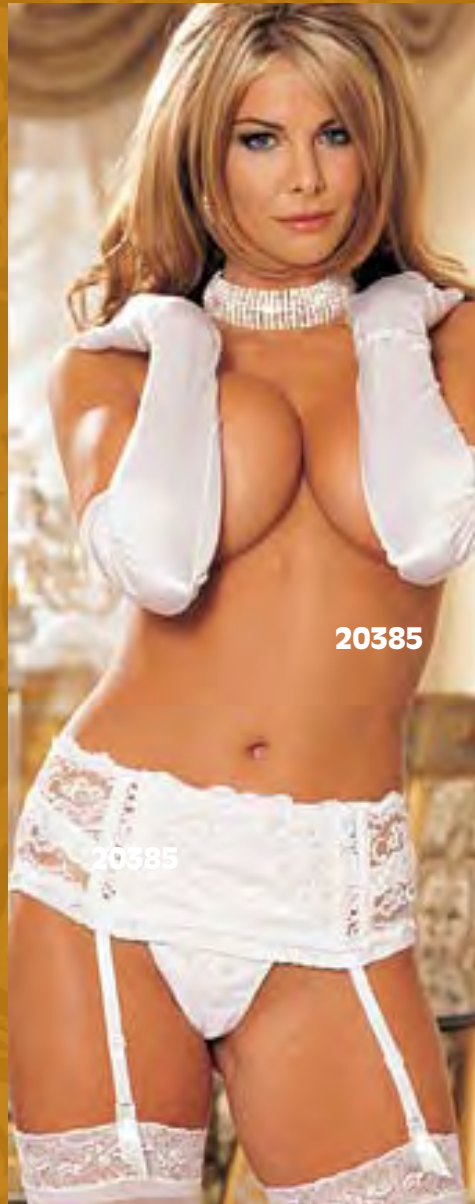
LACE OVERLAY STRETCH SATIN SKIRTINI With ribbon bows at sides. Colors: Black/Pink, White/Blue. Sizes: S-M-L-XL.

25038

BLING GARTER BELT with rhinestone studded Venice across the waist. Adjustable back and brilliant rhinestone adjustable garters. Colors: Black, Red. Sizes: S/M, L/XL. Shown with No. 6618 Stockings.



45018



20385

25088

STRETCH MESH AND "SEXY" LACE GARTER BELT Includes removable adjustable garters with rhinestone adornments and trimmed with "SEXY" lace. Color: Black. Size: O/S.

20385

ANGEL & LOVE STRETCH JACQUARD GARTERBELT Adorned with sequin and pearl embellished lace on front, lattice trim insets, pleated ruffle hem, slimming boning, & lace up back. Comes with removable adjustable garters. Colors: White, Black. Sizes: S/M-L/XL.

51050

ANIMAL PRINT STRETCH SATIN AND EYELASH LACE GARTERBELT With removable adjustable garters. Colors: Pink, Natural, Turquoise. Sizes: S/M-L/XL.



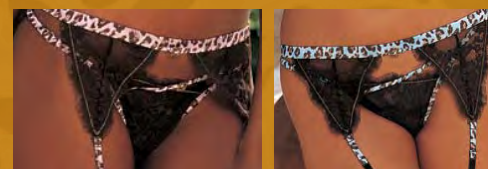
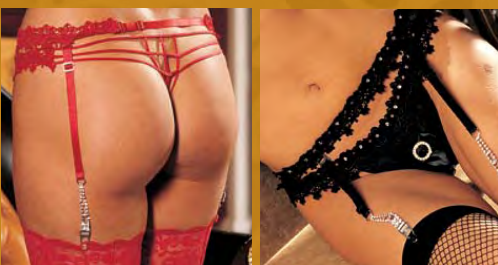
25038

51049

ANIMAL PRINT STRETCH SATIN AND EYELASH LACE THONG With rhinestone buckle. Colors: Pink, Natural, Turquoise. Sizes: S-M-L-XL.

51050

51049



on-trend accents

GLOVES

219
LONG SATIN SPANDEX GLOVES
Colors: Black, Red, White. One Size.

220
STRETCH SATIN SHORT GLOVES
Colors: Black, Red, White. One Size.

232
LACE GLOVES
With ruffle trim. Colors: Black, Red, Royal, White. One Size.

239
STRETCH CROCHET SHORT GLOVES
Colors: Black, White. One Size.

276
SPANDEX GLOVETTES
Colors: Black, Light Blue, Pink, Red, White. One Size.

BOAS

5
CHANDELLE FEATHER BOA
Colors: Black, Hot Pink, Pink, Purple, Red, Royal, White. One Size.



GARTERS

14
BRIDAL GARTER IN GIFT BAG
12 Pack Leg Garter in drawstring bag.
Colors: Assorted (6) White, (6) White/Blue.
One Size.

18
SATIN AND LACE LEG GARTER
Ribbon bow streamers. Colors: Black, Jade, Purple, Red, Royal, White. One Size.

19
NEW AND IMPROVED LEG GARTERS
With soft satin trim and white lace on top and bottom. Colors: Black, Light Blue, Pink, Red, Royal, White. One Size.





10011, 10012, 10013, 10014



10050



10305



EXTEND THE LENGTH OF ANY BRA
 With our elasticized Bra extenders. Extenders come in the colors Black, Beige, White; and 1 hook, 2 hook, 3 hook or 4 hook size. 6 Bra extenders per package, 2 of each color.
 10011 1 Hook-Assorted
 10012 2 Hook-Assorted
 10013 3 Hook-Assorted
 10014 4 Hook-Assorted

OUR BEST SELLING 3/4 PUSH-UP PAD
 Covered in tricot with a contour shelf. Add a full size to your bust. Packaged in a hanger bag with photo insert. Colors: Black, Beige, White. Sizes: A-B-C-D.

ADHESIVE PUSH-UP BRA That molds to breasts, pushes up, provides strapless, backless invisible support and comfort. Two pair included in a hanging package with photo insert. Color: Nude. Sizes: B-C-D.



10026



10026 PUSHES UP, PUSHES IN THE SILICONE BREAST ENHANCER
 Increases your bust 1 full size. Worn between breasts and bra the silicone pads warm to your body and conforms to your shape. Extremely comfortable they look, feel and move like real breast. Featuring a raised nipple. 1 Pair comes boxed with molded plastic tray to store and protect your pads. Color: Nude. Size: B (Small/Medium), C (Medium/Large).

glimmering glitter



816R LIPTRIX REFILLS A package of 3 individual lipsticks of one color. Replacements for refilling original display set. Colors are: See-Through, Pink Satin, 24 Karat, Make-Out Mocha, and Boy-Toy Berry.

813
HEART SHAPED 5 PC GIFT SET

Set includes Rose and Lavender scented 6 oz Shower Gel, 8 oz Bath Crystals, 6 oz Body Lotion, 4 oz Body Scrub. Plus all these products come in an adorable Heart Shaped Box. Colors: Assorted. One Size.



813

814
DRESSING BOX 7 PC GIFT SET

Set includes a sensual Rose and Lavender scented 6 oz Shower Gel, 8 oz Bath Crystals, 6 oz Body Lotion, 4 oz Body Scrub, 4 oz Body Powder, 1 oz Body Powder with puff. Plus, the set comes with a reusable "Dressing Box" to carry all of your intimate belongings. Colors: Assorted. One Size.



814

820
HEARTS OF PASSION 6 PIECE SET Set includes an inviting Honeysuckle fragrance 8.1 oz Shower Gel, 8.1 oz Body Lotion, 4 oz Massage Oil, 2.9 oz Body Butter, Box of 6 dissolving Soap Rose Buds, and a reusable "Designer" Heart shaped Box. Colors: Assorted. One Size.



820

819
"LUNCH BOX" 6 PIECE SPA GIFT SET Set includes Honeysuckle fragrant 10 oz Shower Gel, 10 oz Body Lotion, 7 oz Bath Crystals, Box of 6 dissolving Soap Rose Buds, Spongy Loofa and a clear pink tinted plastic "Lunch Box". Colors: Assorted. One Size.



819

821
STYLISH BOX 6 PIECE GIFT SET Set includes delectable Pomegranate and Coconut fragrant 6.7 oz Shower Gel, 6.7 oz Body Lotion, 2 packages of 10 oz Bath Fizzers, 6 dissolving Bath Beads, plus a re-usable "designer" Box. Colors: Assorted. One Size.



821

818
BUSTIER PURSE 5 PIECE SET Set includes Pomegranate and Coconut 6.7 oz Shower Gel, 6.7 oz Bubble Bath, 2.3 oz Massage Oil, 4.4 oz Lotion, Satin Bustier Purse plus a heart shaped Sachet. Color: Red. One Size.



818



817

817
CORSET JEWELRY HOLDER—THE PERFECT GIFT
 Our beautiful Corset style Jewelry Holder is gorgeously dressed up in exquisite satins and laces. It stands approximately 15" high and has multiple hooks to hold all of your precious necklaces and bracelets. Colors: Mauve, Turquoise, White. One Size.

a trend in the making



L800
LUST EAU DE PERFUME SPRAY FOR WOMEN *Enhanced by sexual attractant pheromones. In an attractive box.*

L801
VIRILE EAU DE COLOGNE SPRAY FOR MEN *Enhanced by sexual attractant pheromones. Comes boxed.*

L802
LUST SCENTED SHIMMERING BODY LOTION *Enhanced with pheromones. 8 Fl.oz.*

L803
LUST SCENTED SHIMMERING BUBBLE BATH *With pheromones. 8 Fl.oz.*

L804
LUST SCENTED SHIMMERING MASSAGE OIL *With pheromones. 8 Fl.oz.*

*luxe
deluxe*



840



841



an air of mystery



842



848



840 MATAHARI Our natural bob-style wig is slightly longer at the side. Measures 9 3/4 in back, nape to crown and 11" at sides from crown. Adjustable inner stretch cap perfects the fit. Colors: Black, Burnt Chestnut, Copper Red, Platinum Blonde. One Size.

841 GLAMOUR GIRL Our straight, sleek-style wig that falls to mid back and comes with versatile bangs. Length is 15" from nape of neck. Adjustable inner stretch cap perfects the fit. Colors: Black, Burnt Chestnut, Copper Red, Platinum Blonde. One Size.

842 MOVIE STAR Hollywood look out—when you wear our silky layered, just-out-of-the-salon-look wig. Incredible volume and body, just shake and wear. Versatile bangs to cut or swoop to the side. Adjustable inner stretch cap perfects the fit. Colors: Black, Burnt Chestnut, Copper Red, Platinum Blonde. One Size.

848 SABRINA Our silky and soft, highlighted long curly wig will transform you. Versatile bangs and adjustable inner stretch cap perfects the fit. Colors: Black, Burnt Chestnut, Copper Red, Platinum Blonde. One Size.

TABLE OF CONTENTS

403... SPANDEX THONG WITH HOOK SIDE CLOSURES 176
 407... SOFT & SUPPLE POLY/SPANDEX FITTED BOXER 174
 412... FAUX FUR ELEPHANT POUCH 176
 423... SLINKY KNIT COCK RING THONG 176
 464... SOFT & SUPPLE POLY/SPANDEX THONG 174
 465... QUARTZ MICRO-FIBER SPANDEX THONG 176
 469... SPANDEX CONTOURED POUCH 176
 475... ITALIAN MICRO-FIBER SPANDEX THONG 173
 477... ITALIAN MICRO-FIBER SPANDEX "HOT" SHORTS 173
 504... CHARMEUSE TUXEDO BOXER 170
 507... COTTON SPANDEX SKULL BUN HUGGER 163
 508... COTTON SPANDEX IRON CROSS BUN HUGGER 164
 509... COTTON SPANDEX SKULL THONG 164
 510... COTTON SPANDEX THONG 174
 511... STRETCH SHEER STRIPE AND KNIT BUN HUGGER 165
 512... STRETCH SHEER STRIPE AND KNIT THONG 165
 513... STRETCH PIN STRIPE KNIT BUN HUGGER 164
 514... STRETCH PIN STRIPE KNIT THONG 165
 532... SILKY KNIT THONG 174
 533... DRY FLEX LIGHT SPANDEX THONG 172
 534... DRY FLEX LIGHT SPANDEX "HOT" SHORTS 172
 536... SPANDEX "HOT" SHORTS 172
 538... SEAMLESS KNIT BUN HUGGERS 176
 574... BIG HOLE STRETCH FISHNET & SPANDEX THONG 175
 575... BIG HOLE STRETCH FISHNET & SPANDEX BRIEF 175
 20059... SOFT CHARMEUSE BOXERS 171
 20061... TWO-TONE CHARMEUSE UNI-SEX ROBE 171
 20394... STRETCH PIN STRIPE TUXEDO BUN HUGGER 168
 30009... SILK PAJAMA SET 170
 30010... SOLID SILK BOXER SHORTS 176
 30025... SILK KNIT BRIEF 169
 30026... SILK KNIT FITTED BOXER SHORT 168, 169
 30027... SILK KNIT THONG 169
 30028... SILK KNIT TANK TOP 168
 30029... SHEER, STRIPE SPANDEX KNIT THONG 166
 30030... SHEER, STRIPE SPANDEX KNIT BOXER SHORTS 167
 30031... SHEER, STRIPE SPANDEX KNIT PANTS 166, 167
 30032... SHEER, STRIPE SPANDEX KNIT KIMONO 167
 30033... SHEER, STRIPE SPANDEX KNIT SHIRT FRONT 167



L801
VIRILE EAU DE COLOGNE
SPRAY FOR MEN *Enhanced*
by sexual attractants
pheromones. Comes boxed.



507

507
COTTON SPANDEX
SKULL BUN HUGGER
Color: Black. Sizes: S-
M-L-XL.



508



513



509

508

COTTON SPANDEX IRON CROSS RHINESTONE BUN HUGGER

Color: Black. Sizes: S-M-L-XL.

509

COTTON SPANDEX SKULL THONG

With break away metal clasps, buckle sides. Color: Black. Sizes: S-M-L-XL.

513

STRETCH PIN STRIPE KNIT BUN HUGGER

With contrast stitching. Color: Black/White, Red/Black. Sizes: S-M-L-XL. Comes boxed.

511

STRETCH SHEER STRIPE AND KNIT BUN HUGGER

Color: Black/Red. Sizes: S-M-L-XL. Comes boxed.

512

STRETCH SHEER STRIPE AND KNIT THONG

Color: Black/Red. Sizes: S-M-L-XL. Comes boxed.

514

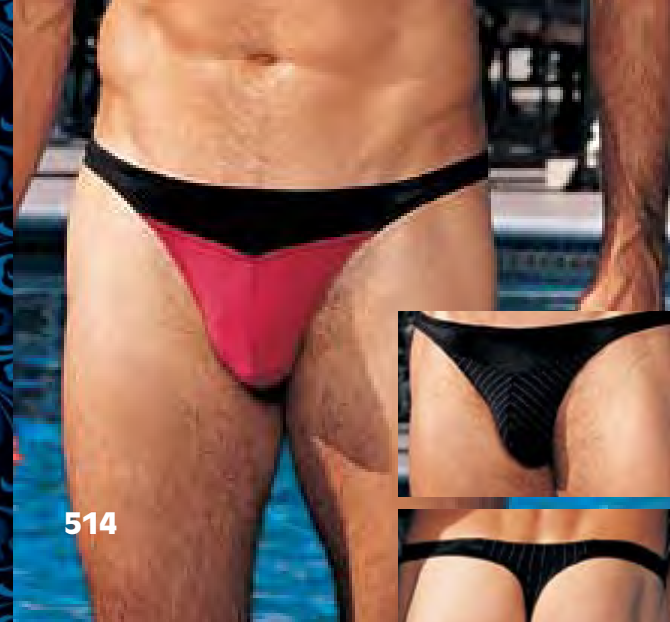
STRETCH PIN STRIPE KNIT THONG

With contrast stitching. Color: Black/White, Red/Black. Sizes: S-M-L-XL. Comes boxed.



511

JUST FOR GYZ



514

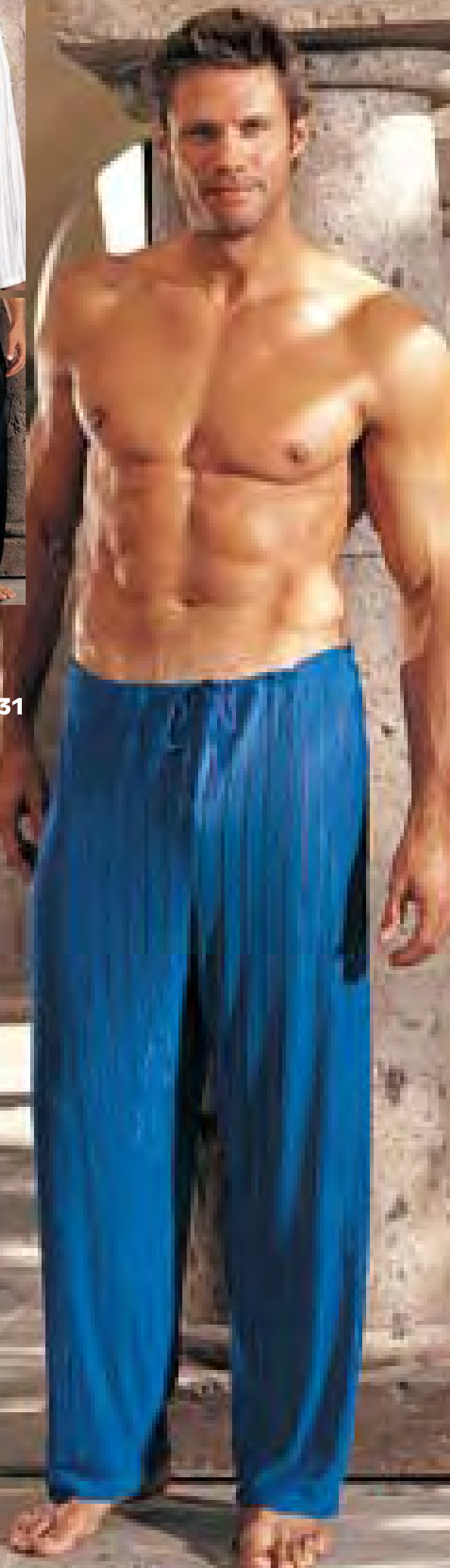


512





30031



30029

30031

SHEER, STRIPE SPANDEX KNIT DRAWSTRING PANTS

Colors: Black, Royal, White. Sizes: S-M-L-XL.

30029

SHEER, STRIPE SPANDEX KNIT THONG

Colors: Black, Royal, White. Sizes: S-M-L-XL. Comes boxed.

30032

SHEER, STRIPE SPANDEX KNIT KIMONO

With belt closure. Colors: Black, Royal, White. Sizes: One size and XL. Shown with Pants No. 30031.

30030

SHEER, STRIPE SPANDEX KNIT BOXER SHORTS

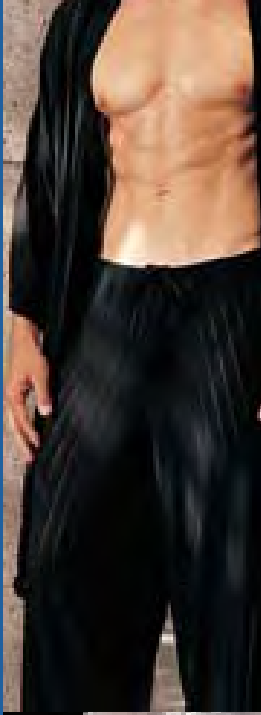
Colors: Black, Royal, White. Sizes: S-M-L-XL. Comes boxed.

30033

SHEER, STRIPE SPANDEX KNIT SHIRT WITH LACE-UP FRONT

Colors: Black, Royal, White. Sizes: S-M-L-XL. Shown with No. 30030 Boxer Shorts.

**RAKISH
GOOD LOOKS**

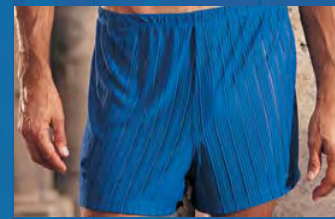


30032

30031



30030



30033

30030





20394



20394
**STRETCH PIN STRIPE
TUXEDO BUN HUGGER**

*Color: Black/White. Sizes: S-
M-L-XL.*



30028

30026

30028

SILK KNIT TANK TOP *Colors: Black, Burgundy, Jade, Purple, Red. Sizes: S-M-L-
XL. Shown with fitted Boxer Shorts No. 30026.*

30026

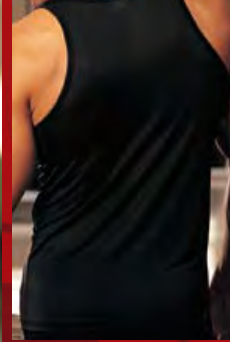
SILK KNIT FITTED BOXER SHORT *With button fly front. Colors: Black, Burgundy,
Jade, Purple, Red. Sizes: S-M-L-XL. Comes boxed.*

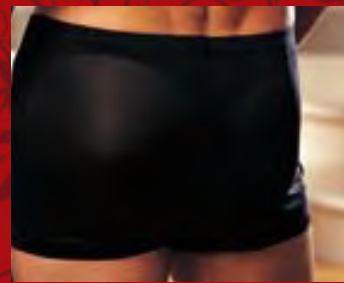
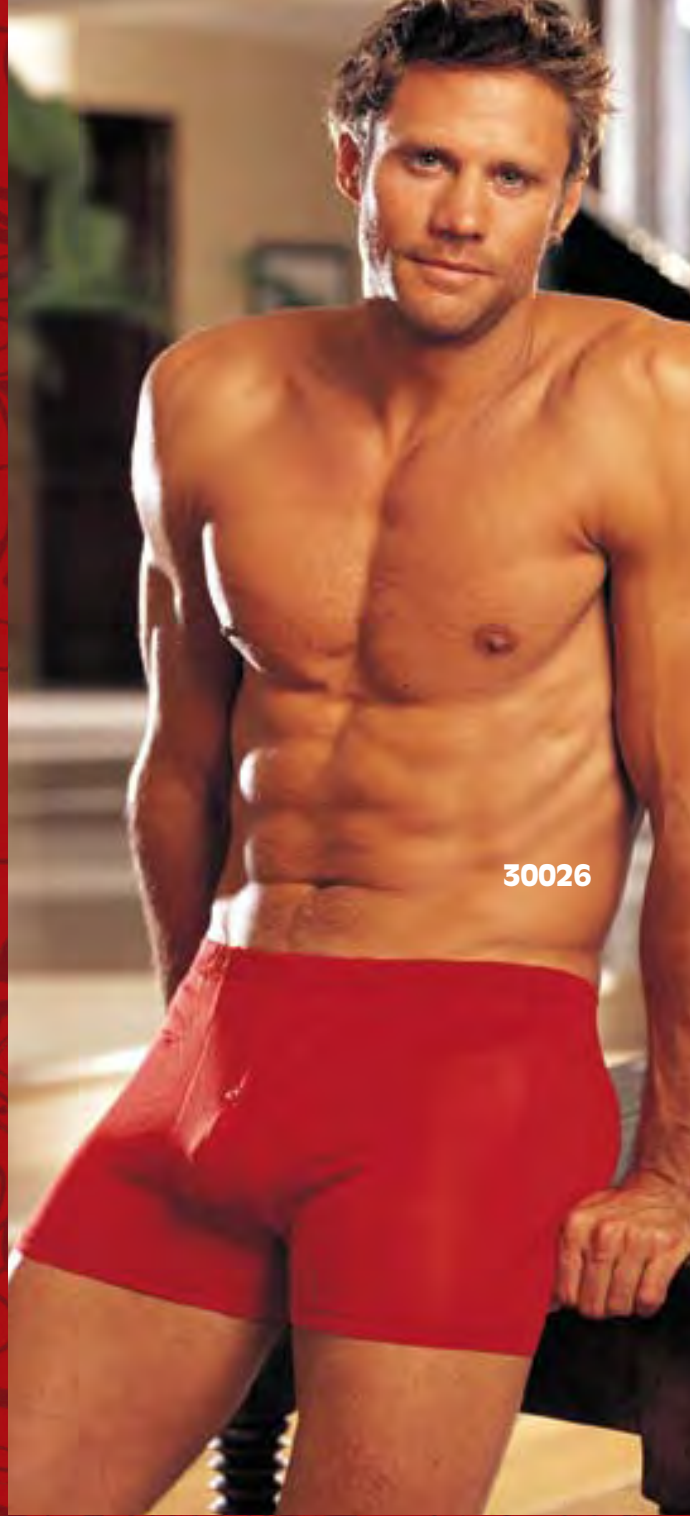
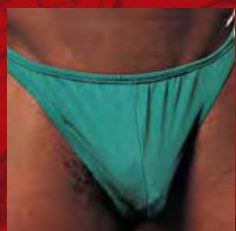
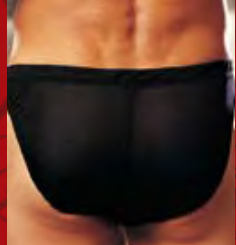
30025

SILK KNIT BRIEF *Colors: Black, Burgundy, Jade, Purple, Red. Sizes: S-M-L-XL.
Comes boxed.*

30027

SILK KNIT THONG *Colors: Black, Burgundy, Jade, Purple, Red. Sizes: M-L-XL-
XXL. Comes boxed.*





POWER SILKS

30009



504



30009

SILK PAJAMA SET

Unisex Silk Stripe Pajama Set with button down, collared Shirt. Cuffed Long Pants come with an elasticized waist and fly opening. Colors: Black, Red, Burgundy, Navy. Sizes: S-M-L-XL.

504

CHARMEUSE TUXEDO BOXER *With fly front trimmed with bow tie and mock buttons. Colors: Black/White, Red/White. Sizes: S-M-L-XL.*



20059

20059
SOFT CHARMEUSE BOXERS

With button down, fly front. Colors: Black, Cinnamon, Crimson, Spruce Green, Navy, Red, Taupe. Sizes: S-M-L-XL. Comes boxed.

20061
ELEGANT TWO-TONE CHARMEUSE UNI-SEX ROBE

With patch pockets, inner tie closure and contrasting belt. Colors: Black/Red, Cinnamon/Copper, Crimson/Navy, Navy/Steel Blue, Spruce/Olive Green, Taupe/Black. Sizes: One Size, XL. Shown with Boxers No. 20059.



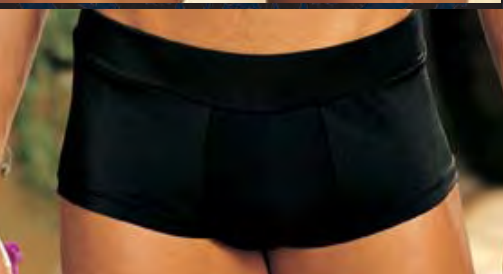
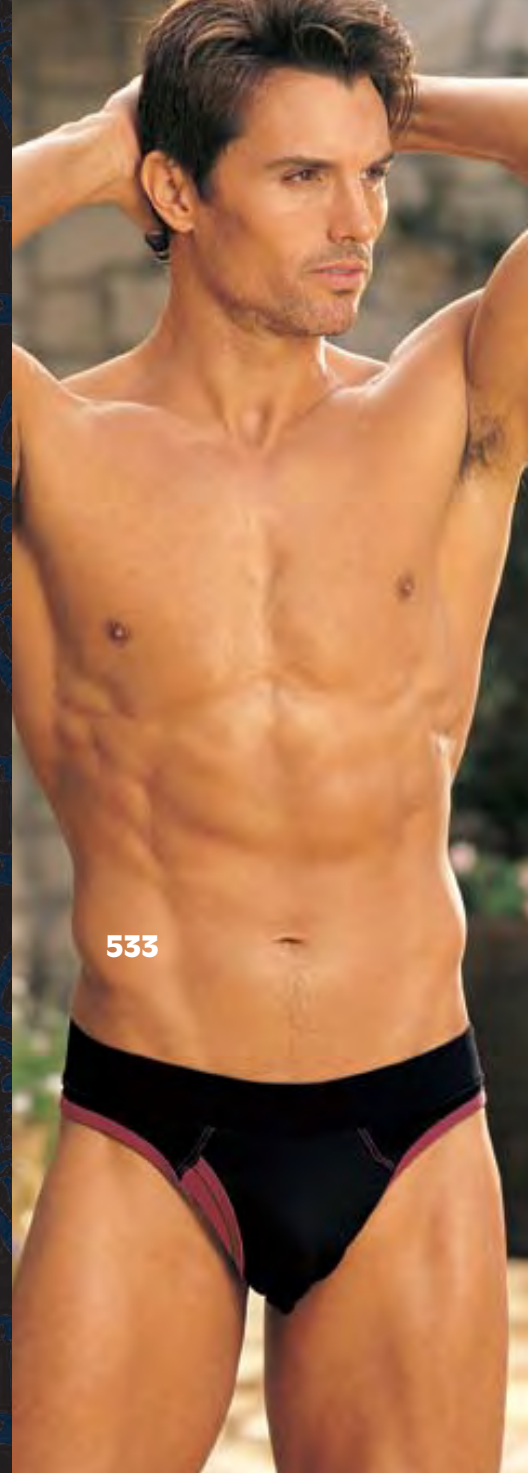
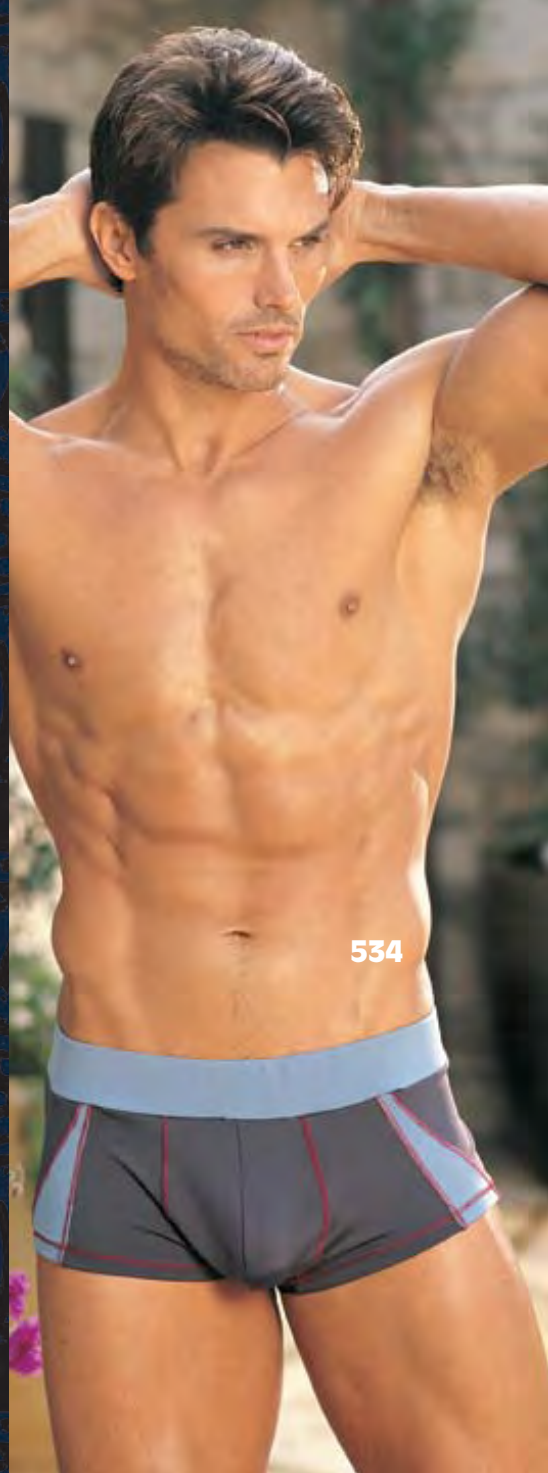
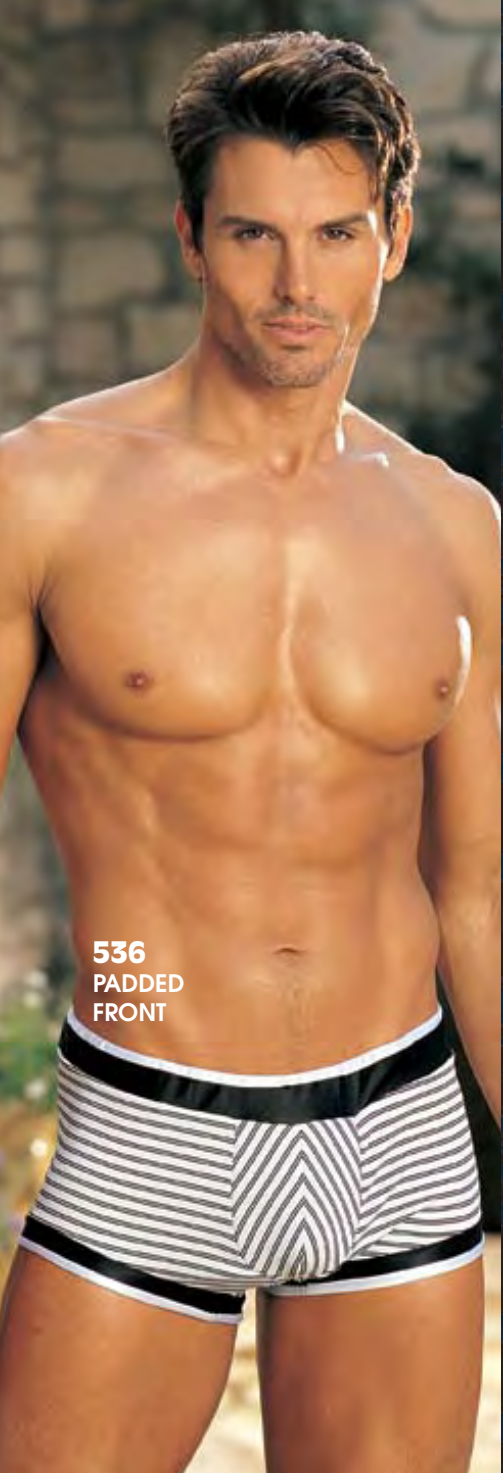
20061

20059



A
**POTENT
PAIR**

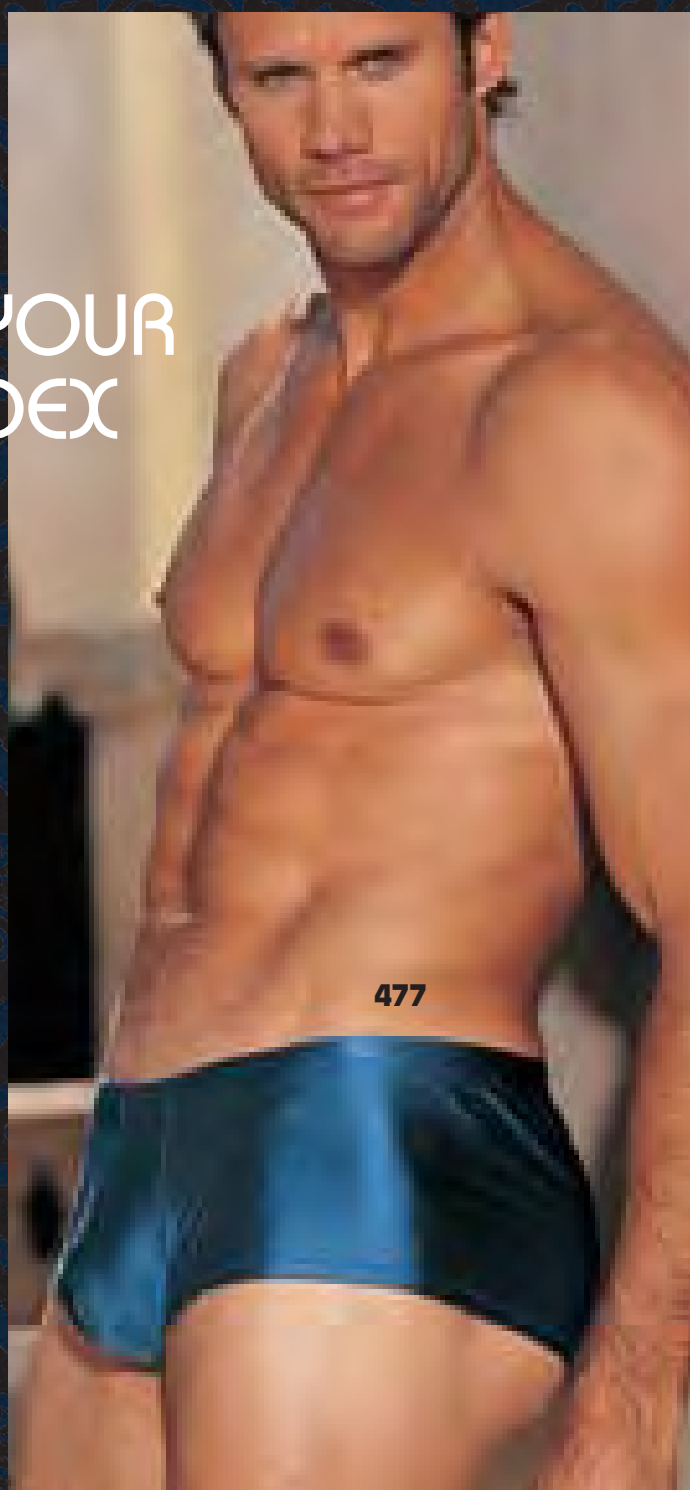






475

FLEX YOUR SPANDEX



477

536
SPANDEX "HOT" SHORTS *With slightly PADDED CONTOUR FRONT and wide comfortable waist band. Colors: Black, Stripe (black/white). Sizes: S-M-L-XL. Comes boxed.*

534
DRY FLEX LIGHT SPANDEX, COLOR BLOCKED "HOT" SHORTS *With contrasting stitching. Dry Flex spandex is a performance fabric with moisture management and anti-bacterial finish plus UV protection. Colors: Black/Maroon, Carbon/Platinum, Navy/Columbia Blue. Sizes: S-M-L-XL. Comes boxed.*

533
DRY FLEX LIGHT SPANDEX, COLOR BLOCKED THONG *With contrasting stitching and Fly Front. Dry Flex spandex is a performance fabric with moisture management and anti-bacterial finish plus UV protection. Colors: Black/Maroon, Carbon/Platinum, Navy/Columbia Blue. Sizes: S-M-L-XL. Comes boxed.*

475
ITALIAN MICRO-FIBER SPANDEX THONG *Shiny and soft. Colors: Black, Copper, Turquoise, White, Purple, Red. Sizes: S-M-L-XL. Comes boxed.*

477
ITALIAN MICRO-FIBER SPANDEX "HOT" SHORTS *Shiny and soft. Colors: Black, Copper, Turquoise, White, Purple, Red. Sizes: S-M-L-XL. Comes boxed.*



407



464



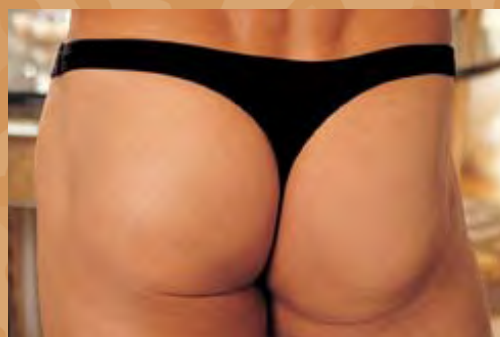
174



510



532





574



575



407
SOFT & SUPPLE POLY/SPANDEX
FITTED BOXER

With adjustable, lace-up sides, contour fit front. Colors: Black, White, Leopard. Sizes: S-M-L-XL. Comes boxed.

464
SOFT & SUPPLE POLY/SPANDEX
THONG

With lace-up front. Colors: Black, White, Leopard. Sizes: S-M-L-XL. Comes boxed.

510
COTTON SPANDEX THONG
With multi-colored metallic BULL DOG KING on the front, Color: Black. Sizes: S-M-L-XL.

532
SILKY KNIT THONG *With studded skull and cross bones. Colors: Black, Dark Red. Sizes: S-M-L-XL*

574
BIG HOLE STRETCH FISHNET AND
SPANDEX THONG *With contrast stitching and contoured fit. Colors: Black, White. Sizes: S-M-L-XL.*

575
BIG HOLE STRETCH FISHNET AND
SPANDEX BRIEF *With contrast stitching and contoured fit. Colors: Black, White. Sizes: S-M-L-XL.*

MANNISH MESH

UNSTOPPABLE SILK

30010

30010

SOLID SILK BOXER SHORTS *With button, fly front. Colors: Purple, Grey, Red, Jade, Gold. Sizes: S-M-L-XL. Comes boxed.*

403

SPANDEX THONG WITH HOOK SIDE CLOSURES *Colors: Black, Red, Royal, White. Sizes: S-M-L-XL.*

469

SPANDEX CONTOURED POUCH *Colors: Black, Red, White. One Size.*

423

SLINKY KNIT COCK RING THONG *Incorporating elasticized inner support ring gives support, lifting and enhancing. Snap closure for fit. Colors: Black, Purple, Red. Sizes: S-M-L-XL.*

412

FAUX FUR ELEPHANT POUCH *Color: Grey. One Size.*

465

QUARTZ MICRO-FIBER SPANDEX THONG *Colors: Black, Royal, White. Sizes: S-M-L-XL. Comes boxed.*

538

SEAMLESS KNIT BUN HUGGERS *With sexy open criss-cross sides. Colors: Black, White. Sizes: M/L, L/XL.*

403

469

412

465

538

Shirley's
Sexy Model
SEARCH
WINNER!

The New Sexy

Hollywood glitz and glamour came to the Bahamas, as Shirley wrapped up a yearlong Search for Sexy with a sultry weekend in paradise. More than 500 of the world's hottest women tossed their corsets in the ring, but when the votes were tallied, Miami's Brandi Reed (sponsored by Play Things) was crowned sexiest of all.



Winner Brandi Reed on the runway the Finale Show



Below: Shirley's Director of Design and Marketing, Dana Walczuk (second from left), helps wrap a weekend of sun, fun and fashion in Nassau, as Shirley's yearlong Search comes to a close. With her from left to right are: Brandi Reed (Shirley's Sexy Model Search Missy winner), Ashley Lowe (Missy first runner up), and Cathleen Lee Cornish (Missy second runner up).



Below: Shirley's Director of International Sales, Eric Schlobohm with (left to right): Miranda Walz (Plus Size second runner up), Brandi Miller (Plus Size first runner up), and Brooke Stuart (Shirley's Sexy Model Search Plus Size winner).



Fun, flirty and passionate in pink, Brandi shows a new side of sexy, in Shirley's sexy-sweet chemise, fashioned of stretch dot lace with a ruffled neckline, hem and shoulder straps. 20387, with removable adjustable garters and matching G-string; in sizes S, M, L, XL and Plus sizes.

Special thanks to
 NBC, ESPN, EXTRA,
 Telemundo,
 Nygard.com, BlueRay
 Technologies, LLC,
 Fifth Avenue Models,
 TheBachelorGuy.com,
 Sheraton Hotels &
 Resorts, RockStar
 Energy Drink,
 Paul Mitchell and
 PlayerXT.com.